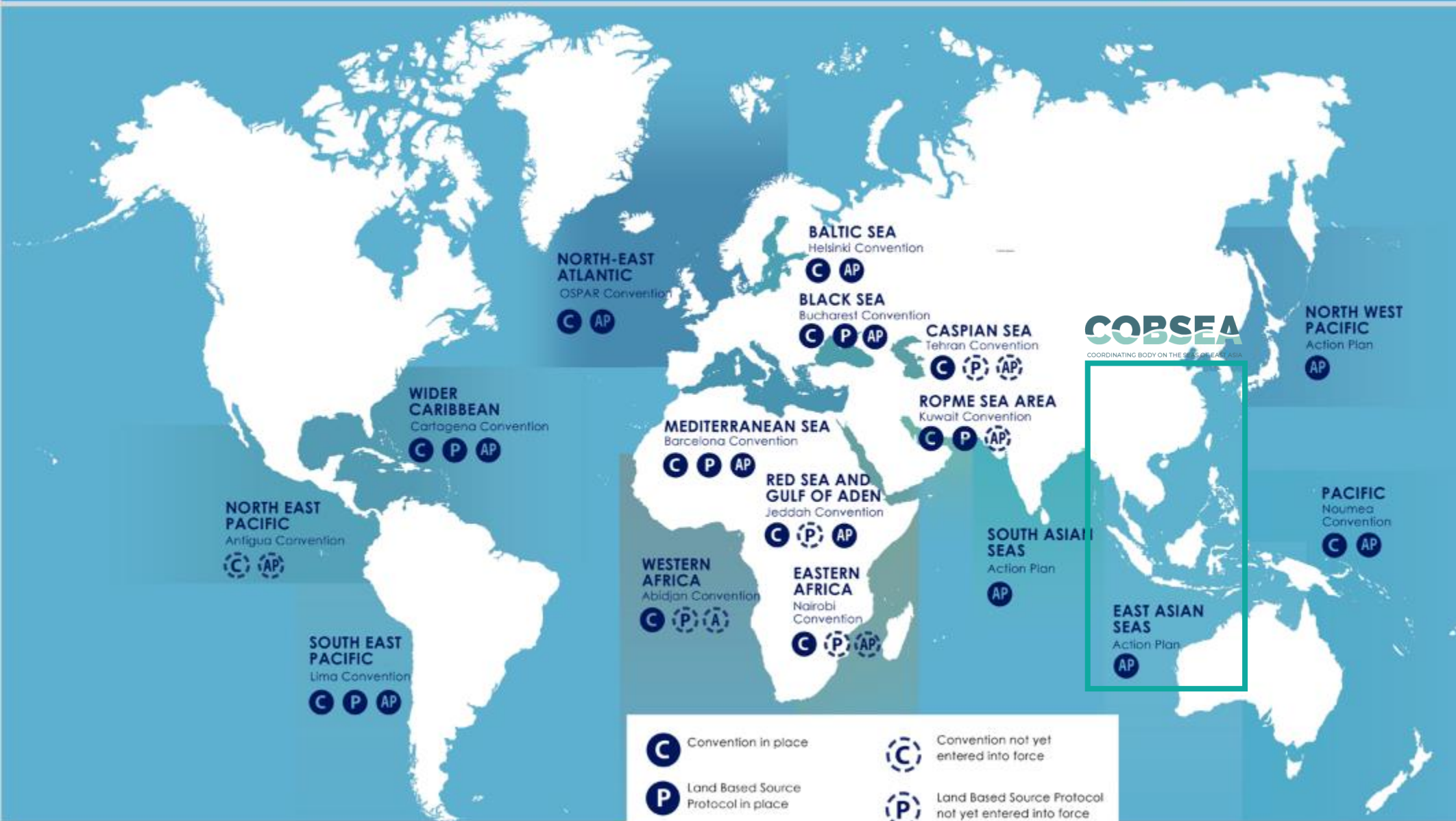


GLOBAL AND REGIONAL PERSPECTIVES ON KNOWLEDGE MANAGEMENT

2nd Meeting of the Regional Scientific and Technical Committee of
the SCS SAP Project
23 – 25 July 2024; Bangkok, Thailand

Mahesh Pradhan
COBSEA Coordinator



COBSEA
COORDINATING BODY ON THE SEAS OF EAST ASIA

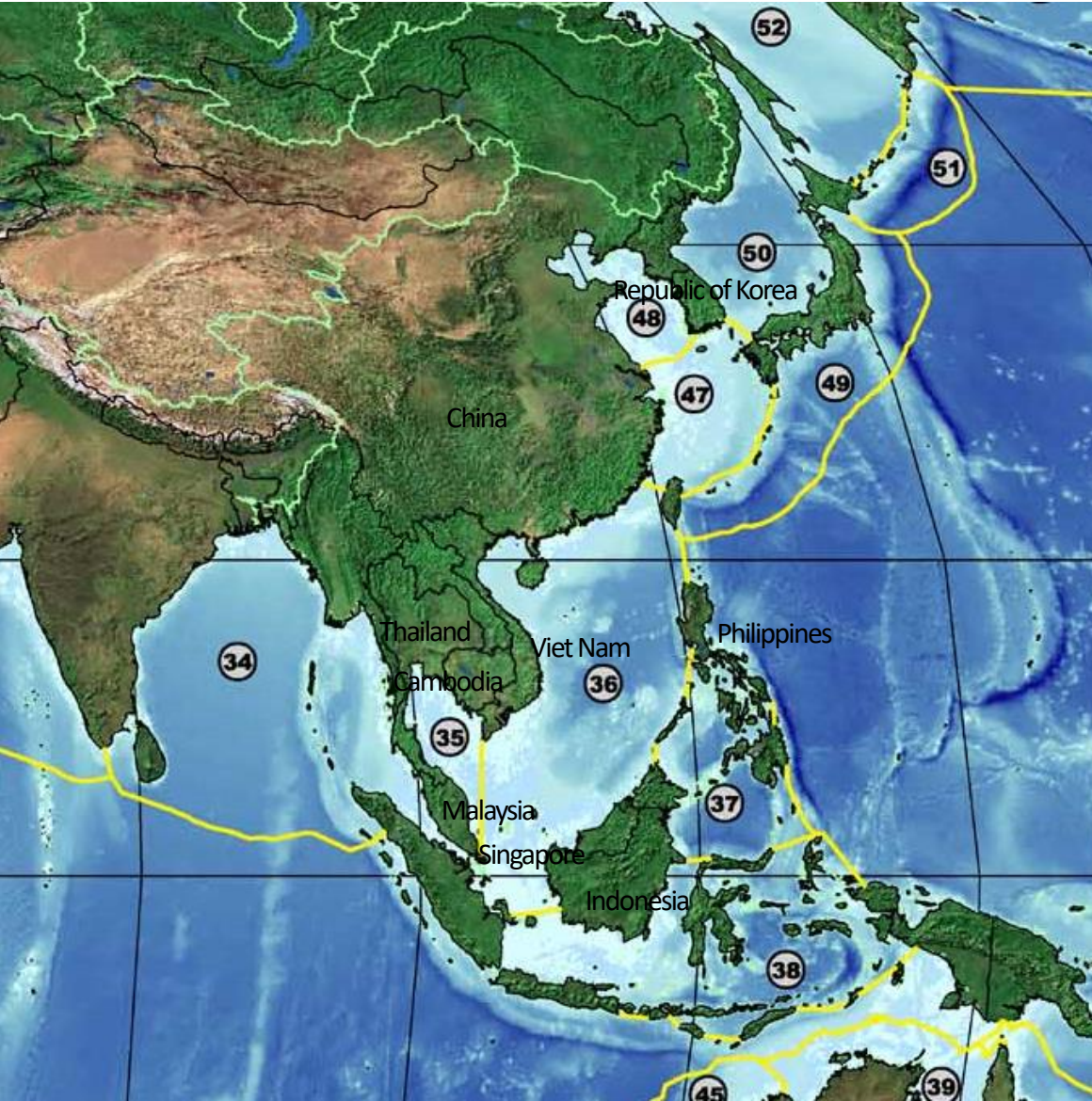
	Convention in place		Convention not yet entered into force
	Land Based Source Protocol in place		Land Based Source Protocol not yet entered into force
	Regional Marine Litter Action Plan in place		Regional Marine Litter Action Plan is being developed
	Regional Marine Litter Assessments under preparation		



ANTARCTIC
Convention on the Conservation of Antarctic Marine Living Resources



Coordinating Body on the Seas of East Asia – COBSEA



East Asian Seas Action Plan 1981/1994

Intergovernmental body aimed at protection and sustainable development of the marine & coastal environment of East Asian Seas

Regional Seas

One of 18 UNEP Regional Seas Conventions and Actions Plans

COBSEA 9 countries

Cambodia, People's Republic of China, Indonesia, Republic of Korea, Malaysia, Philippines, Singapore, Thailand, and Viet Nam

Secretariat

Hosted by Thailand (in Bangkok), administered by UNEP

www.cobsea.org



COBSEA Strategic Directions 2023–2027



Adopted in 2023, guides COBSEA initiatives across 3 thematic programmes;

Marine Pollution Prevention, Reduction and Control

- ❑ COBSEA Regional Action Plan on Marine Litter (RAP MALI)
- ❑ GEF Clean and Healthy Oceans Integrated Programme (CHO-IP): Nutrients, waste water and sediment

Target 7, 16

Marine & Coastal Biodiversity, Ecosystems Conservation and Management

- ❑ Sustainable Blue Economy
- ❑ Marine and Coastal Spatial Planning
- ❑ Marine Protected Areas (MPA) and MPA Networks
- ❑ Marine and Coastal Habitats Conservation and Restoration

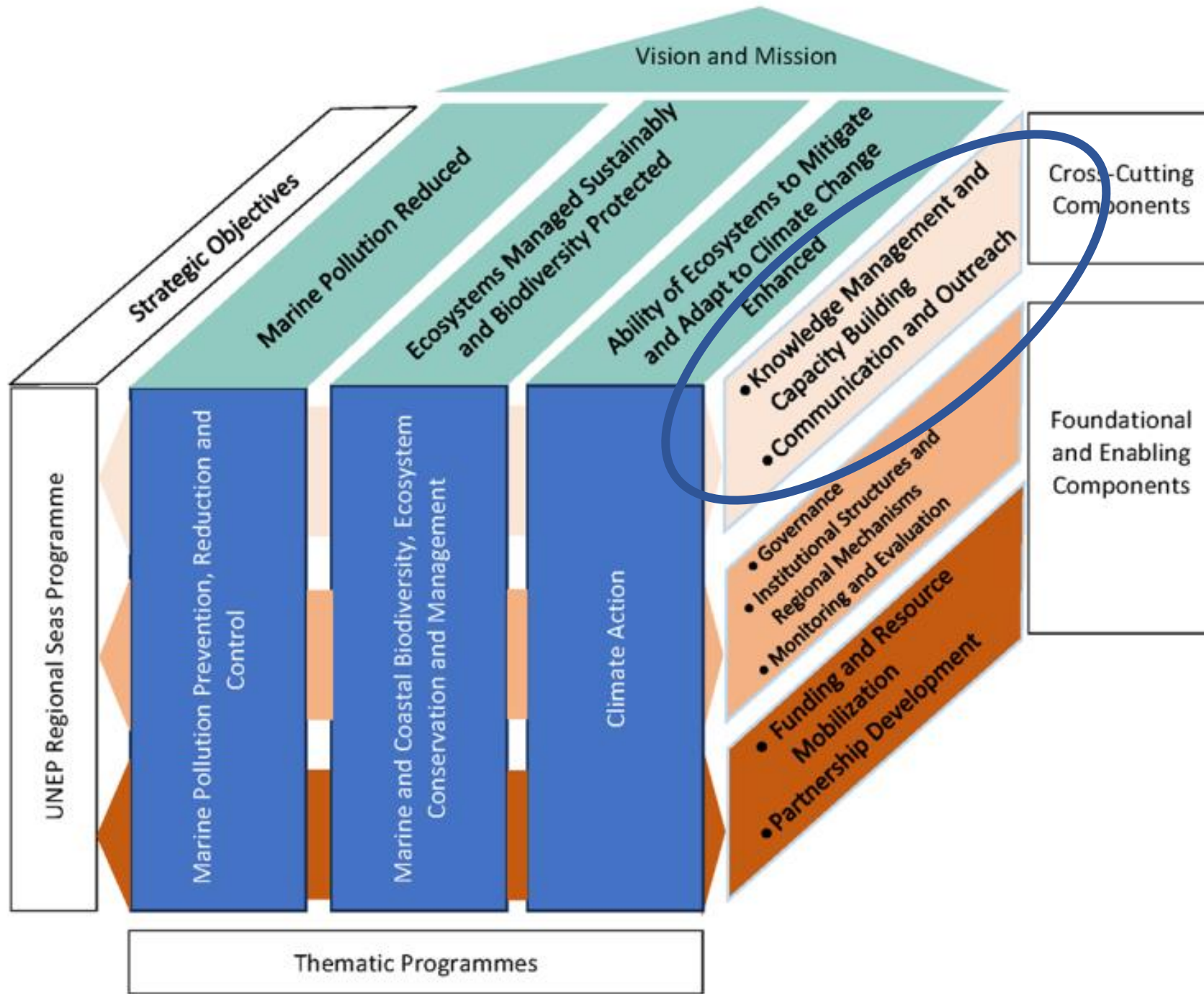
Target 1, 2, 3, 4, 11

Climate Action

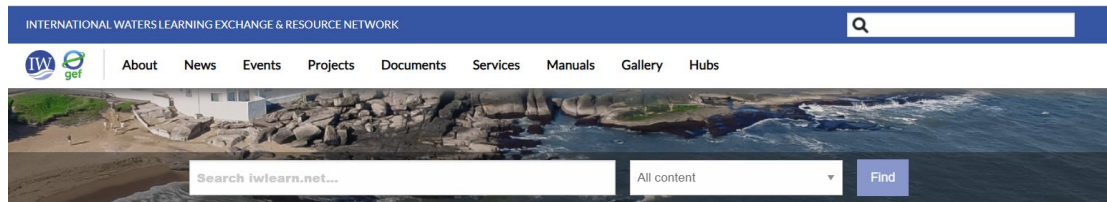
- ❑ Climate Adaption, Resilience and Blue Carbon
- ❑ Nature-based Solutions and Ecosystem-based Adaption

Target 8





GEF IW:LEARN



Welcome to the home of GEF International Waters projects

IW:LEARN is the Global Environment Facility's (GEF) International Waters Learning Exchange and Resource Network. The IW:LEARN project was established to strengthen transboundary water management around the globe by collecting and sharing best practices, lessons learned, and innovative solutions to common problems across the GEF International Waters portfolio. It promotes learning among project managers, country officials, implementing agencies, and other partners.



Projects

Use the mapping tool to explore the GEF International Waters Portfolio



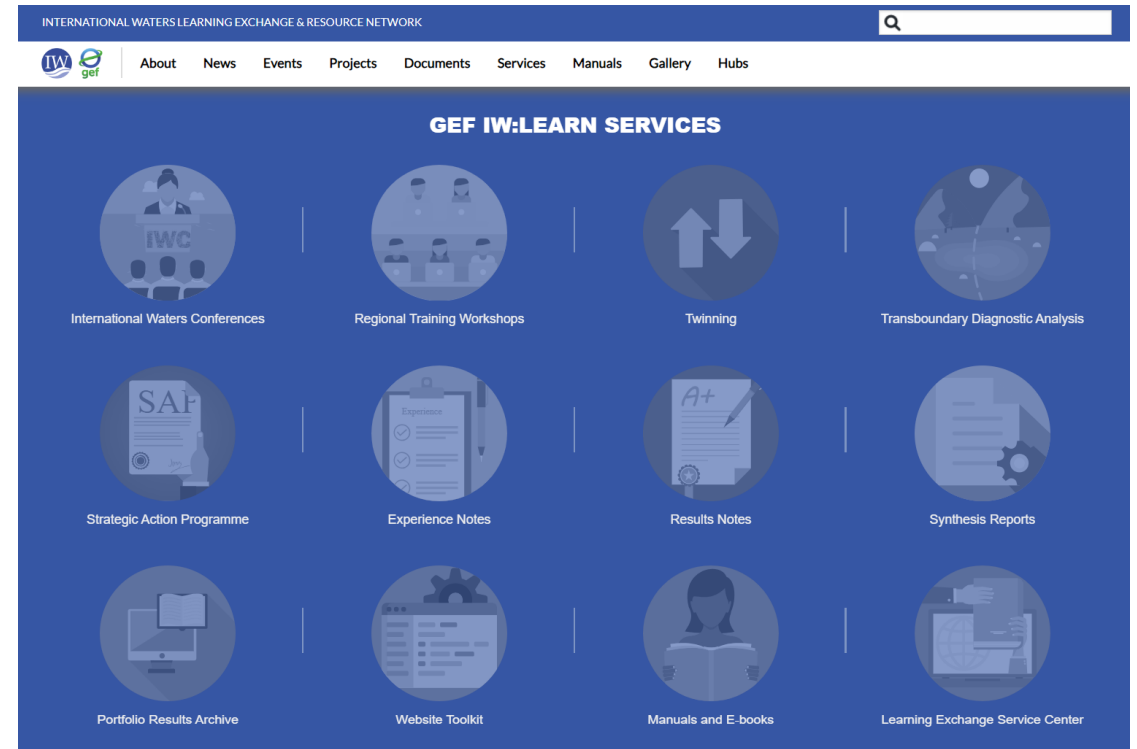
News

News, stories and announcements from the GEF International Waters community



Events

Upcoming events organized by the GEF International Waters project and our partners



<https://iwlearn.net/>

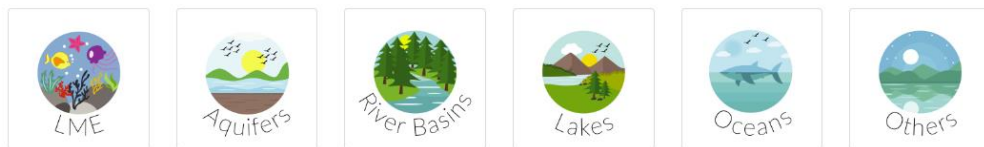
GEF IW:LEARN

IW gef Data Maps About Resources

Search Sign in

Welcome to IW:LEARN Spatial Lab

Discover The Spatial Dataset Theme



Discover The Project Datasets

Diktas

Albania

Baikal

Bosnia

Croatia

Ulanude

Filters Clear

TEXT

Search by text

KEYWORDS

Acantilados

Accessibility

Accomodation

accomodationcapacity

accrete

accretion

Actividad petrolera

admin_boundary

Administrative units

Agreement

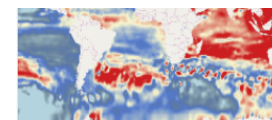
Agriculture

Aichi Targets

airoport

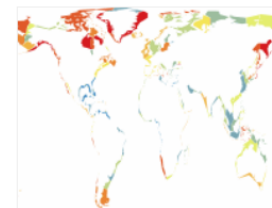
a la vive

Al Hoceima



The following maps provide estimates of sea level rise based on measurements from satellite radar altimeters. The local trends were estimated using data from TOPEX/Poseidon (T/P), Jason-1, and Jason-2, which have monitored the same ground track since 1992. An inverted barometer has been applied...

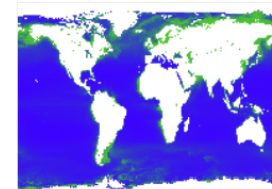
gridanode 5 May 2019 965 0 0
Create a Map



OCEANS
gnc nutrient loading coolbeans

Sensitivity of COSCATs to changes in nutrient loading according to COOLBEANS model. Red denotes high sensitivity, whereas blue represents low sensitivity. The primary purpose of the COOLBEANS model is to quantitatively link changes in bottom water oxygen concentrations to shifts in terrestrial nutri...

Global_Nutrient_Cycle 2 May 2019 373 0 0
Create a Map



OCEANS
chlorophyll_a

Downsampled layer of mean chlorophyll-a from MODIS Chlorophyll-a Concentration This layer represents the near-surface concentration of chlorophyll-a in mg m-3, calculated using an empirical relationship derived from in situ measurements of chlor_a and blue-to-green band ratios of in situ remote s...

Global_Nutrient_Cycle 2 May 2019 576 0 0
Create a Map

<https://iwlearn.net/>

Learning Exchanges, Capacity Building and Trainings



ICRI and GCRMN for Coral Reef Experts


 GLOBAL CORAL REEF
 MONITORING NETWORK


 INTERNATIONAL
 CORAL REEF INITIATIVE


 Australian Government


 AUSTRALIAN INSTITUTE
 OF MARINE SCIENCE

Status of Coral
 Reefs of the
 World: 2020

Edited by: David Souter, Serge Planes,
 Jérémy Wicquart, Murray Logan,
 David Osura and Francis Staub




 Australian Government
 Department of Foreign Affairs and Trade


 Gouvernement Princier
 PRINCIPAUTÉ DE MONACO


 Government Offices of Sweden
 Ministry of the Environment and Energy


 PRINCE ALBERT II
 OF MONACO
 FOUNDATION


 UN
 environment
 programme 50
 1972-2022

Other Online Platform and Tools

The screenshot displays the ASEAN Biodiversity Dashboard interface. At the top left is the logo for the ASEAN Biodiversity Dashboard. A navigation bar contains buttons for Home, Biodiversity Data (highlighted in orange), Indicator Trends, Country Profiles, and Time Animations. On the right side, there are logos for the ASEAN Centre of Biodiversity and the ASEAN region. The main area features a world map with various data layers overlaid. A left sidebar lists layers such as Species Occurrences, ASEAN Flyway Networks, Zoonosis Outbreaks, Habitat Building Species, Protected Areas and Heritage Parks (including ASEAN Heritage Parks (2023), Protected Areas, and Key Biodiversity Area), OECMs (including Philippines), Intact Forest Landscapes, and Boundaries. A search bar for layer attributes is located at the top of the map area. The bottom of the dashboard includes a footer with the text "ACB – ASEAN Biodiversity Dashboard" and a small inset map of Southeast Asia.



IOC Sub-Commission for the Western Pacific (WESTPAC)

Advancing knowledge and cooperation for a healthy ocean and prosperous society



2021 United Nations Decade
2030 of Ocean Science
for Sustainable Development

[Home](#) [Our Work](#) [UN Ocean Decade](#) [News](#) [Events](#) [Resources](#) [About Us](#)



Work Area #6:

Knowledge Services and Hubs



Ocean Forecasting System

[Read more](#) →

(the website is currently
undergoing maintenance.)



Regional Training and
Research Centers

[Read more](#) →



WESTPAC Biodiversity
Portal

[Read more](#) →

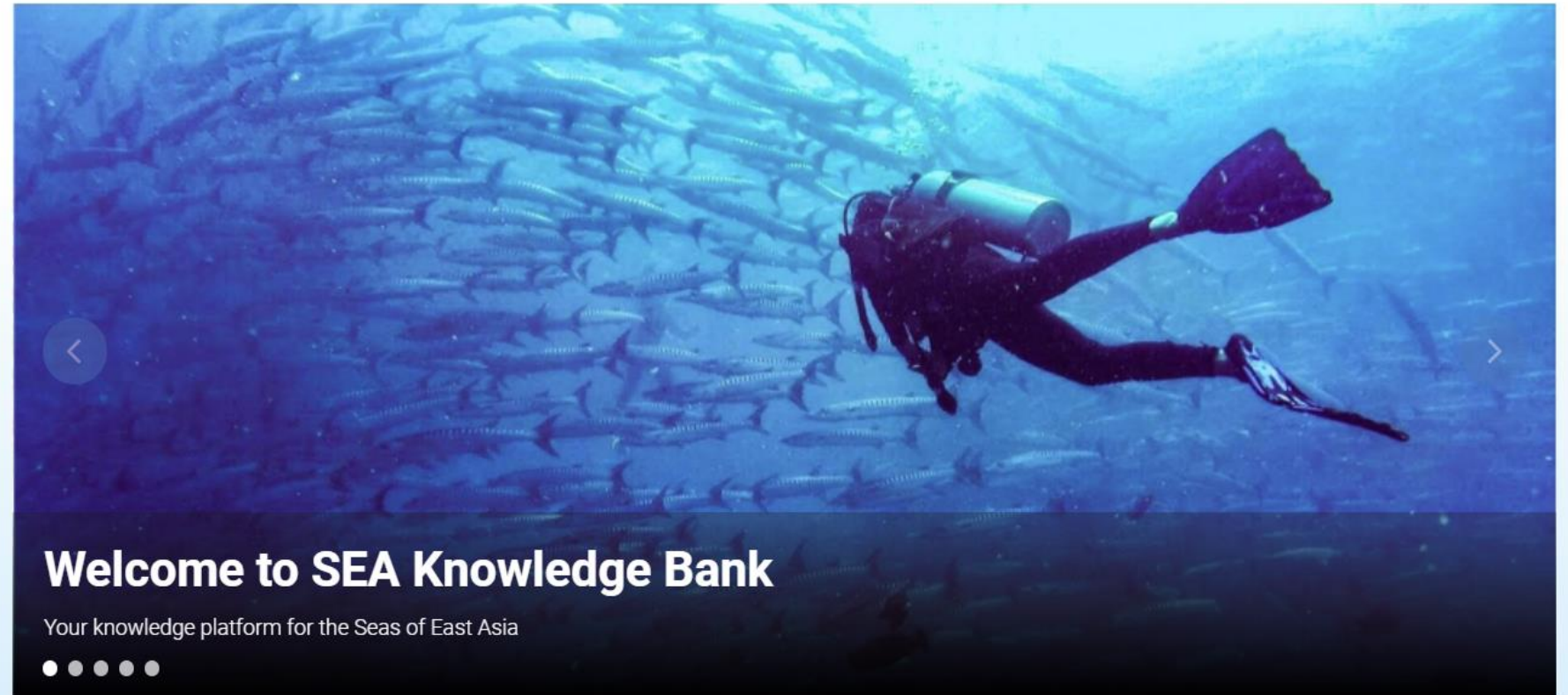


Standard Operating
Procedures for Monitoring
the Impacts of Ocean

[Read more](#) →

Welcome to SEA Knowledge Bank

The Seas of East Asia (SEA) Knowledge Bank serves as a knowledge platform for policymakers, planners, managers, investors and other stakeholders to scale up Integrated Coastal Management (ICM) and investment in sustainable development of coasts and oceans across East Asia.



Welcome to SEA Knowledge Bank

Your knowledge platform for the Seas of East Asia





Key considerations

- Maximizing global existing platforms by regionalizing
- Building on existing mechanisms and platforms
- Avoid duplicating efforts to ensure resources are used effectively
- Be able to reach on-the-ground local practitioners and ensure accessibility
- Sustainability aspects

Mahesh Pradhan
COBSEA Coordinator
Secretariat of the Coordinating Body on the Seas of East Asia
Bangkok, Thailand
unep-cobsea@un.org | www.cobsea.org
mahesh.pradhan@un.org

