

# Thailand

## SCS SAP Project

### First Meeting of the Regional Working Group on Mangroves



**Mangroves Conservation Division**  
**Department of Marine and Coastal Resources**

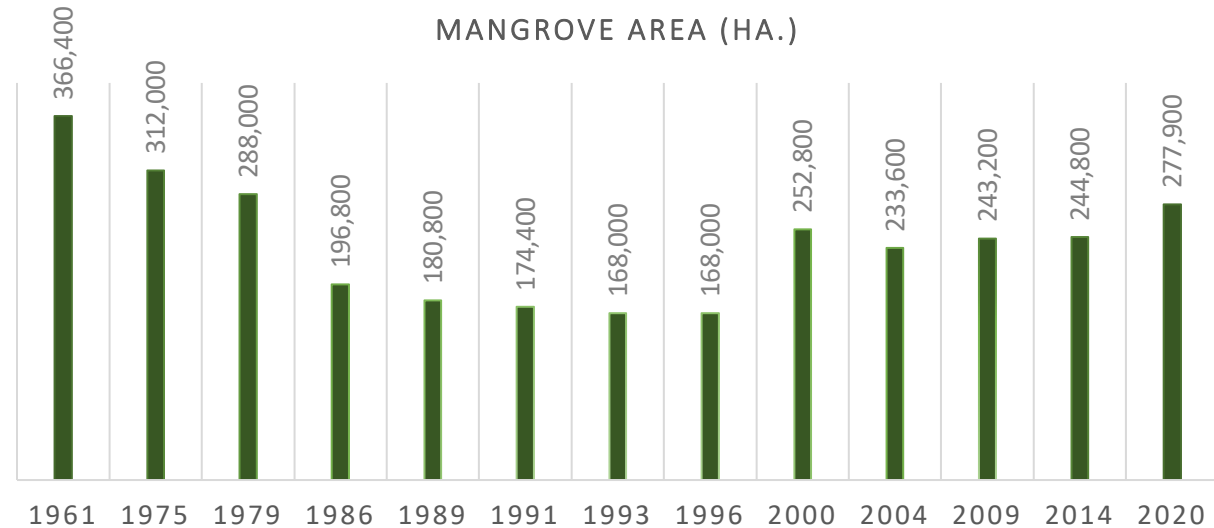


# Mangrove Distribution in Thailand



- Mangrove distribution in 24 provinces along Thailand's coastline
- The total area of mangrove in 2020 was 277,923 ha. divided into **Protected Areas by DNP : 60,436 ha.**  
**Mangrove Conservation Areas by DMCR : 217,487 ha.**

## Changes of Mangrove area



# Key Mechanisms for Management of Mangrove in Thailand



**The government's national policies and plans**, including the National Strategic Plan (2018-2037), the National Reform Plan on Natural Resources and Environment, the National Forestry Policy, the 20-Year Strategy of the Ministry of Natural Resources and Environment (2017-2036), and various urgent policies.



**Cabinet resolutions** on mangrove forests in determining the boundaries and utilization conformation in mangrove forest areas.



**Promotion of Marine and coastal resources Act. 2015** which is a law requiring the creation and declaration of mangrove conservation areas in various provinces and promoting the participation of coastal communities including those involved in all sectors in conservation and restoration of mangrove.



**Other relevant laws** such as the National Reserved Act., Forestry Act., Fishery Act., Forestry Act.,, and Land Act.





# Mangrove Implementation in Thailand

## Restoration

Reforestation with people and various agencies in the form of CSR.

## Conservation

Investigating and expropriating areas of illegally encroached mangrove by law enforcement.

Monitoring and patrolling to prevent intrusion and destruction of mangrove forests.

## Utilization

Managed to be a National Park, an eco-tourism attraction, learning and research center, and fishing grounds.

## Land allocation

Solving the problem of housing management for communities in the mangrove forest area.

## Declaration and Designation

Conserving the mangrove forest areas under Sections 18 and 23 of the DMCR Act. by declaring mangrove as conserved areas.

## Studying and Researching

Studying and researching the diversity of mangrove forests such as plants, birds, insects, mushrooms, fungus, benthic animals, and aquatic animals with educational institutions and other agencies.





# Mangrove target sites to SCS SAP in Thailand

## Original Proposed Sites

1. Trat Province
2. Welu River Estuary  
Chanthaburi Province
3. Kung Kraben Bay  
Chanthaburi Province
4. Thung Kha Bay – Savi Bay  
Chumphon Province
5. Pak Phanang Bay  
Nakorn Si Thammarat Province



## Proposed Sites for Implementation

1. Welu River Estuary  
Chanthaburi Province
2. Bandon Bay  
Surat Thani Province
3. Pak Phanang Bay  
Nakorn Si Thammarat Province

# SAP Evaluation (2008-2021)

	Trat	Thung Kha Bay	Pak Phanang Bay	Kung Kraben Bay	Welu River Estuary
Who is main responsible?  (site management)	Local Division of Department of Marine and Coastal Resources (DMCR)	Local Division of Department of National Parks, Wildlife and Plant Conservation (DNP)	Local Division of DMCR	Kung Kraben Bay Royal Development Study Centre, Office of the Royal Development Projects Board (ORDPB)	Local Division of DMCR
Participation engagement	All of the site areas has a mechanism for participation with all involved sectors in managing the areas as it is a national management approach and SDG Goals.				
Rehabilitation of mangrove (ha = hectare)	Reforestation for 313 ha.	Reforestation for 269 ha. (Information on the forest plantation area in Chumphon Province)	Reforestation for 1,223 ha. (Information on the forest plantation area in Nakhon Si Thammarat Province)	Reforestation for 5,204 ha. (Information on the forest plantation area in Chanthaburi Province)	
Monitoring and trends of changes	The DMCR has been tracking and monitoring changes in mangrove areas using satellite imagery since 2008, and there were 3 monitoring of mangrove forest changes and land use changes across the country in 2014, 2017, and 2020.				
Have any national initiatives and project?	yes	yes	yes	yes	yes
Budget source	DMCR	DNP	DMCR	ORDPB	DMCR
Recommendation	Replace by another site (Bandon Bay)	Under effective management	Future support	Under effective management	Future support



# SAP Evaluation (2008-2021)

SAP Output/Target	Implication at the national level	Details at sites
Outcome 1.1 will achieve the appropriate forms of sustainable management established for 860,000 ha of mangrove	25,524 ha. (base on SCS SAP Document)	Trat, Thung Kha Bay, Pak Phanang Bay, Kung Kraben Bay, Welu River Estuary
1.1.1 Declaration of 57,400 ha of mangrove as National Parks and Protected Areas	National Parks and Protected Areas 11,212 ha.	Trat , Chanthaburi, Nakhon Si Thammarat, Chumphon
1.1.2 Designation and plans for the management of 166,600 ha of mangrove as non-conversion, sustainable use areas	Out of National Parks and Protected Areas 40,814 ha. which is in the process of creating a conservation mangrove forest area	Trat , Chanthaburi, Nakhon Si Thammarat, Chumphon
1.1.3 Reform of laws and regulations for the sustainable use of 602,800 ha of mangrove forest	5 sites	<ul style="list-style-type: none"> <li>- Enforce the Promotion of Marine and coastal resources Act. 2015</li> <li>- Improve the regulation of Private sector reforestation</li> </ul>
1.1.4 Replanting of 21,000 ha of deforested mangrove land	7,009 ha.	Trat, Thung Kha Bay, Pak Phanang Bay, Kung Kraben Bay, Welu River Estuary
1.1.5 Biodiversity increased for 11,200 ha of mangrove forest via enrichment planting	Not available	Not available
1.1.6 Established mechanism for monitoring management, ecological and socio-economic indicators at 26 sites [based on SAP results framework]	25,524 ha. (base on SCS SAP Document)	Trat, Thung Kha Bay, Pak Phanang Bay, Kung Kraben Bay, Welu River Estuary



# SAP Implementation: Best Practices

## Lessons learned



The success and increase of mangrove forest restoration is due to the government policy and the cooperation of people, other agencies, and private sectors.



The challenge in managing mangrove forests is to balance economic use and environmental conservation by providing appropriate income for local communities from a resource base while maintaining the abundance of mangrove forest areas.



Improving the law and enforcing Promotion of Marine and coastal resources Act. 2015 provides more opportunities for coastal communities and people from all sectors to participate in mangrove forest maintenance, thereby enabling more efficient integration.



# SAP Implementation: Best Practices

## SHOWCASE Pak Phanang Bay

Conducting mangrove habitat allocation for coastal communities for living and occupation along with mangrove reforestation.



### Land's Allocation

- Area 2,615 ha.
- benefited 1,233 households.



# SAP Implementation: Consultations



DMCR convened a meeting of stakeholders to define SCS SAP project implementation guidelines and select operational sites including planning operational activities on 1<sup>ST</sup> July 2021.





# Proposed Sites for Implementation

## Site1: Welu River Estuary

Chanthaburi Province

**Territory:** Mangrove Forest of Welu River Estuary covers the area of Laem Sing District and Khlung District, Chanthaburi Province.

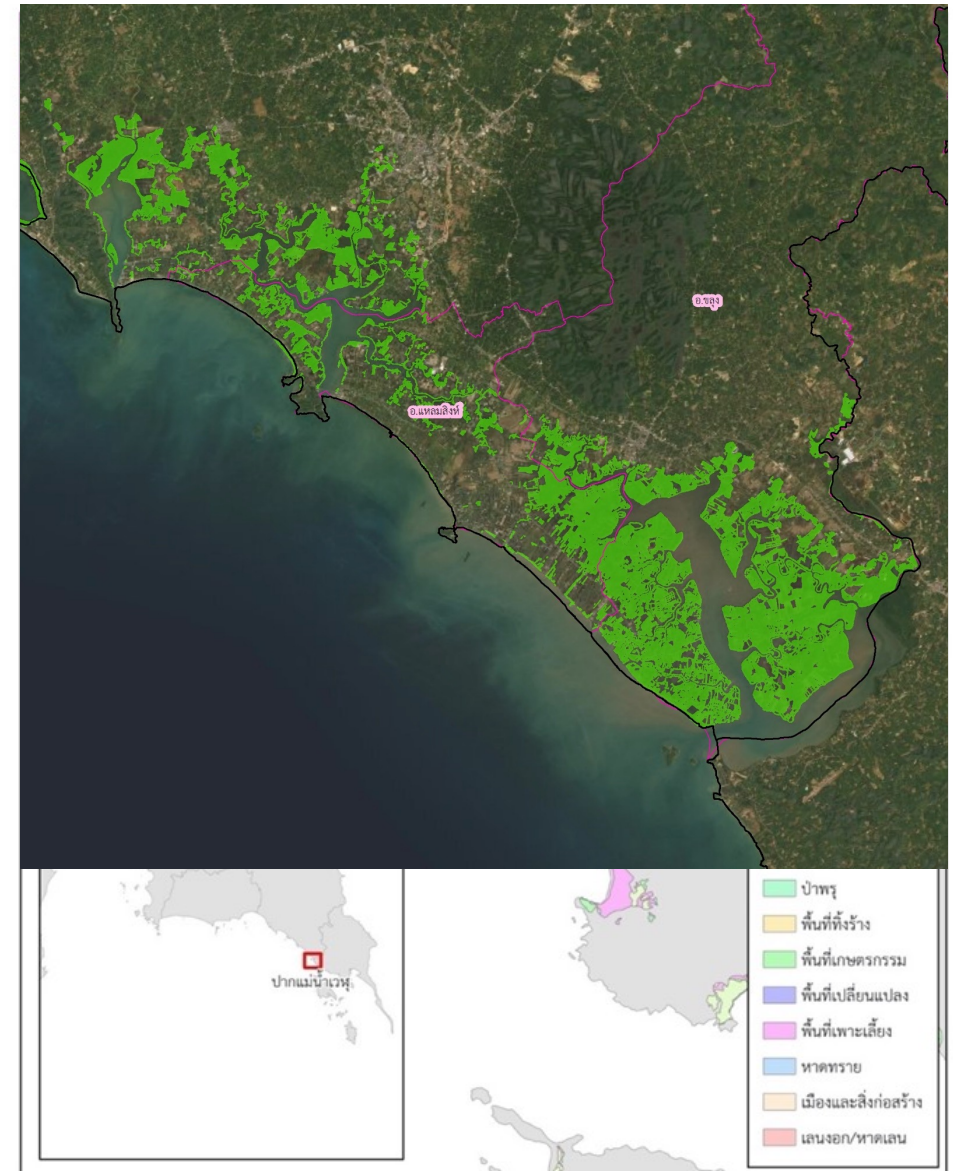
**Area size :** 11,913 ha.

**Characteristics of the area :** Estuary

**Significance of the area:** It is an important wetland area of the country.

**Utilization of the area:** It is an eco-tourism attraction, a source of learning/studying on the nature of mangrove forests, and a source of local fishing.

**Problem:** Community expansion, tourism business expansion, and increasing of waste along the coast.



# Proposed Sites for Implementation

## Site2: Bandon Bay

Surat Thani Province

**Territory:** Mangrove Forest of Bandon Bay covers the area of 7 districts, namely Mueang District, Chaiya District, Kanchanadit District, Don Sak District, Tha Chang District, Tha Chana District, and Phunphin District, Surat Thani Province.

**Area size:** 9,730 ha.

**Characteristics of the area:** It is one of the largest coves on the Eastern Seaboard, with a vast lagoon stretching out into the sea about 1-2 km from the coast formed by sediment deposition, so it is very suitable for aquaculture.

**Significance of the area:** It is an important wetland area of the country.

**Utilization of the area:** aquaculture, shrimp farming, shellfish farming, and local fisheries

**Problem :** Conflict between local fishermen and cockle farming operators in Bandon Bay and environmental degradation due to overuse.





# Proposed Sites for Implementation

## Site3: Pak Phanang Bay

Nakhon Si Thammarat Province

**Territory:** covers the area of Tha Sala District, Pak Phanang District, Mueang District, Nakhon Si Thammarat Province.

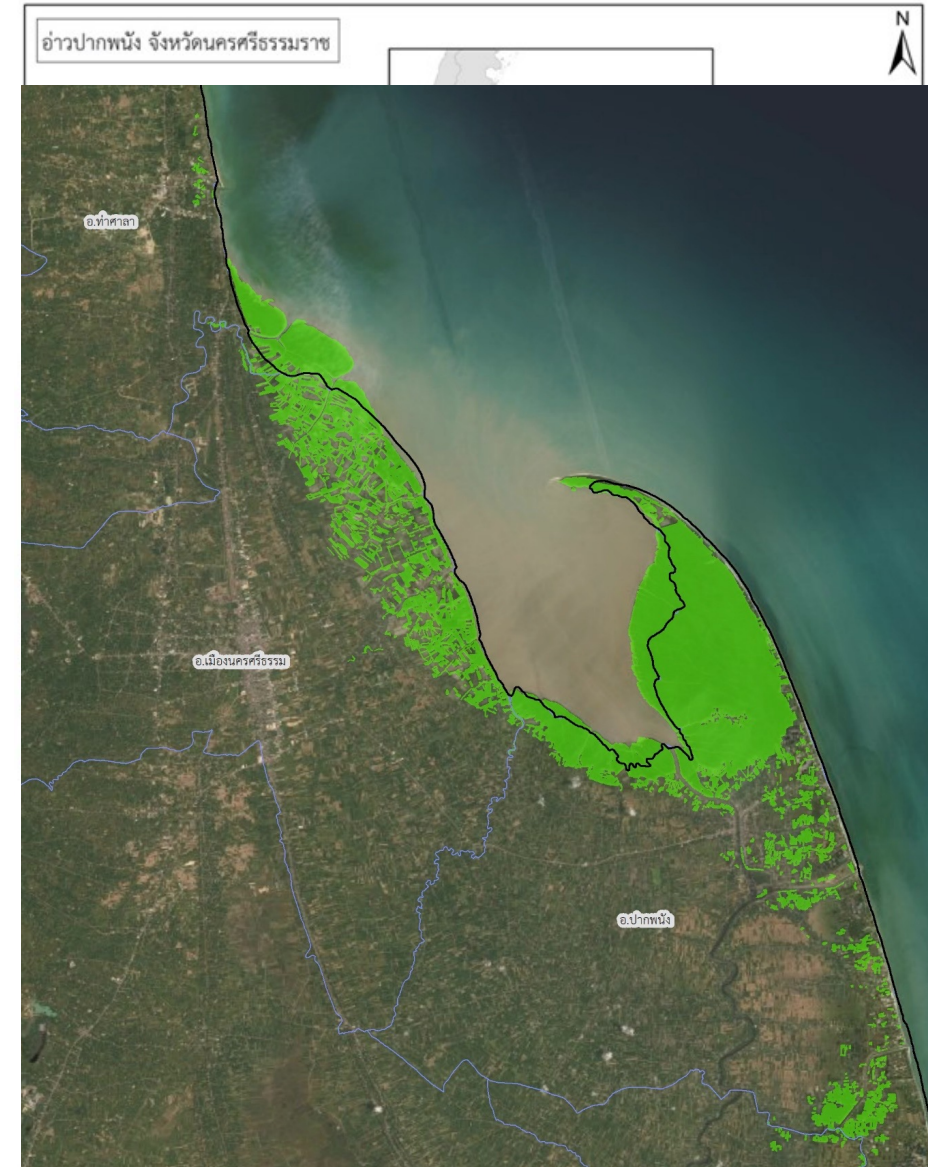
**Area size:** 15,869 ha.

**Characteristics of the area:** Most of the area is mangrove forest with the shrimp farming scattered around the coast.

**Significance of the area:** It is an important wetland area of the country.

**Utilization of the area:** local fishery site, ecotourism site, and mangrove forest study site.

**Problem :** The increase in population and the expansion of the communities where people live and work in the mangrove forest area.





# SAP Implementation: Activities Site1

Activity	
<b>A</b>	Declaration of mangrove as National Parks and Protected Areas -None-
<b>B</b>	Designation and plans for the management of mangrove as non-conversion, sustainable use areas
<b>1</b>	Zoning for the sustainable use of mangrove and control for the appropriate utilization of mangroves including conservation zone, sustainable use zone for community and development zone
<b>2</b>	Develop IEC (Information, Education and Communication) materials on the value and importance of mangrove ecosystem and for public relation purpose
<b>3</b>	Organize a series of awareness raising events on the value and importance of mangrove ecosystem
<b>4</b>	Develop IEC (Information, Education and Communication) materials and PR materials on eco-tourism at the pilot sites
<b>C</b>	Reform of laws and regulations for the sustainable use of mangrove forest - None-
<b>D</b>	Replanting of deforested mangrove land
<b>5</b>	Support and promote the mangrove plantation, beach plantation - to prevent coastal erosion
<b>E</b>	Biodiversity increased for mangrove forest via enrichment planting -None-
<b>F</b>	Established mechanism for monitoring management, ecological and socio-economic indicators at sites
<b>6</b>	Conduct SMART Patrolling to monitor and control the mangrove encroachment and utilization of the coastal resources
<b>7</b>	Conduct survey to collect baseline information on mangrove ecosystem and its biodiversity of the project site
<b>8</b>	Conduct research, study and monitor the change of coastal ecosystem at the project site
<b>9</b>	Establish management mechanism (including M&E) and strengthening on-site management, coordination and communication

# SAP Implementation: Activities Site 2

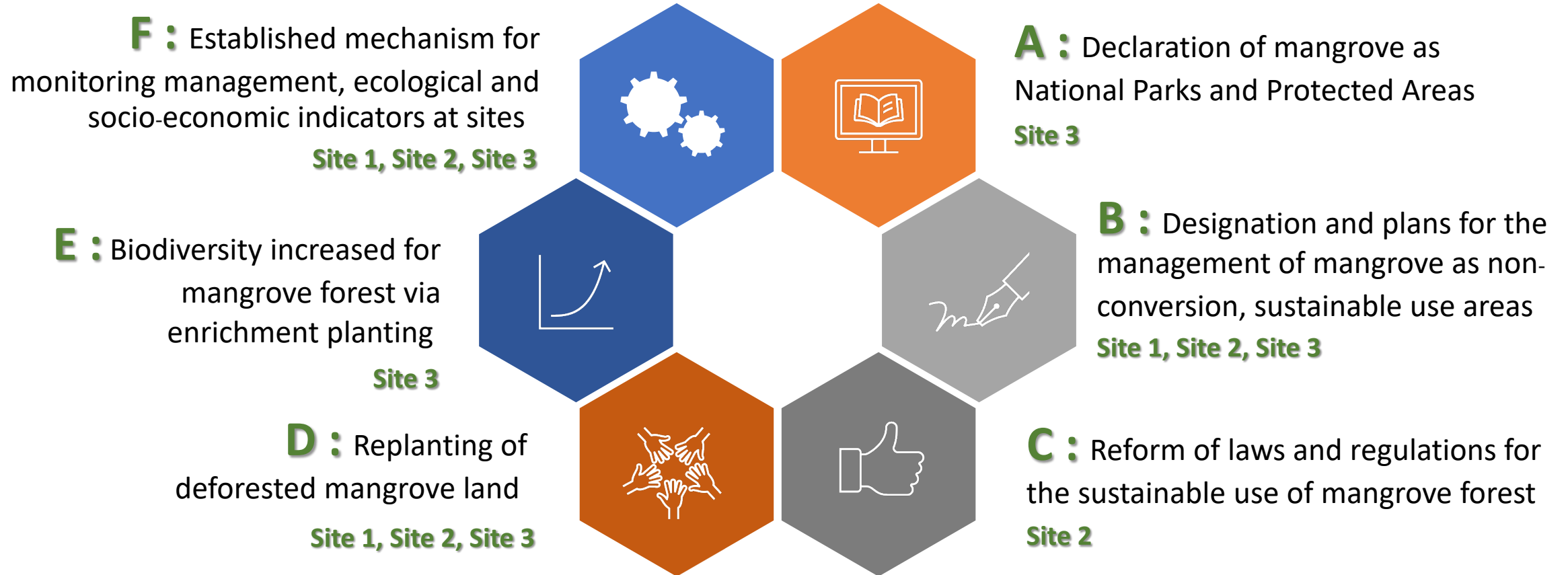
Activity	
<b>A</b>	Declaration of mangrove as National Parks and Protected Areas - None -
<b>B</b>	Designation and plans for the management of mangrove as non-conversion, sustainable use areas
<b>1</b>	Manage the zone to control the use of area for appropriate marine nursery
<b>2</b>	Survey and zoning for the utilization of the resource such as conservation zone, fishery zone and tourism zone
<b>3</b>	Support the construction of bamboo wall for slowing the impact on erosion (investment)
<b>4</b>	Support the community network to bleed the marine animals and release to the sea
<b>5</b>	Conduct monitor and evaluate of the quantity and value of the release marine animals
<b>6</b>	Develop awareness raising campaign on waste collection including organize waste collection activity in the mangrove area
<b>7</b>	Develop Nature Walk Way – with nature sign
<b>8</b>	Construct of the Bird Watch Tower
<b>9</b>	Promote recreation activity with kayak
<b>10</b>	Establish the mangrove conservation network
<b>11</b>	Provide the equipment for the management of crab bank group
<b>12</b>	Set up Social Enterprise and provide training
<b>13</b>	Support the local vegetable for community food initiative
<b>14</b>	Support the construction of community vegetable and tree plot
<b>C</b>	Reform of laws and regulations for the sustainable use of mangrove forest
<b>15</b>	Conduct assessment for the effectiveness on the management of mangrove conservation area
<b>D</b>	Replanting of deforested mangrove land
<b>16</b>	Provide support for mangrove plantation
<b>E</b>	Biodiversity increased for mangrove forest via enrichment planting - None-
<b>F</b>	Established mechanism for monitoring management, ecological and socio-economic indicators at sites
<b>17</b>	Support for the expense (officer) for monitoring and patrolling
<b>18</b>	Establish management mechanism (including M&E) and strengthening on-site management, coordination and communication

# SAP Implementation: Activities Site 3

Activity	
A	Declaration of mangrove as National Parks and Protected Areas
1	Coordinate and communicate with relevant stakeholders and local communities to raise awareness on the declaration of the mangrove conservation area
2	Conduct zoning and demarcation for the appropriate use of the area
B	Designation and plans for the management of mangrove as non-conversion, sustainable use areas
3	Promote the fishery nursery as a demonstration site for income generation of the community
4	Increase the Knowledge Management on conservation, restoration for sustainable use of mangroves
5	Develop local fishery products
6	Increasing the marketing promotion of local products
7	Support community to improve the village products
8	Develop standard of homestay
9	Develop Nature Walk Way – with nature sign
10	Construct of the Bird Watch Tower
C	Reform of laws and regulations for the sustainable use of mangrove forest - None -
D	Replanting of deforested mangrove land
11	Support the community for the seed orchard nursery
E	Biodiversity increased for mangrove forest via enrichment planting
12	Promote the replantation and rehabilitation of mangroves in the pilot site
F	Established mechanism for monitoring management, ecological and socio-economic indicators at sites
13	Develop training curriculum and provide training on local mangrove ecosystem for the volunteer to protect the sea
14	Establish the Urban Forest committee with the development of master plan
15	Establish Patrolling team - consisting with Marine Protection Areas, volunteer and communities- and provide training on SMART Patrolling
16	Collect information to prepare the Ramsar Information Sheets (RIS) with regular monitoring and evaluation Survey and monitoring to collect baseline information and the state of mangrove forest (DMCR budget)
17	Survey and monitoring to collect baseline information and the state of mangrove forest (DMCR budget)
18	Establish management mechanism (including M&E) and strengthening on-site management, coordination and communication



# Conclude : SAP Implementation





An aerial photograph of a lush green mangrove forest. A winding waterway cuts through the dense vegetation. In the center of the waterway, a small boat with several people on board is visible. The text "Thank you" is overlaid in white, bold, sans-serif font in the upper left quadrant of the image.

# Thank you