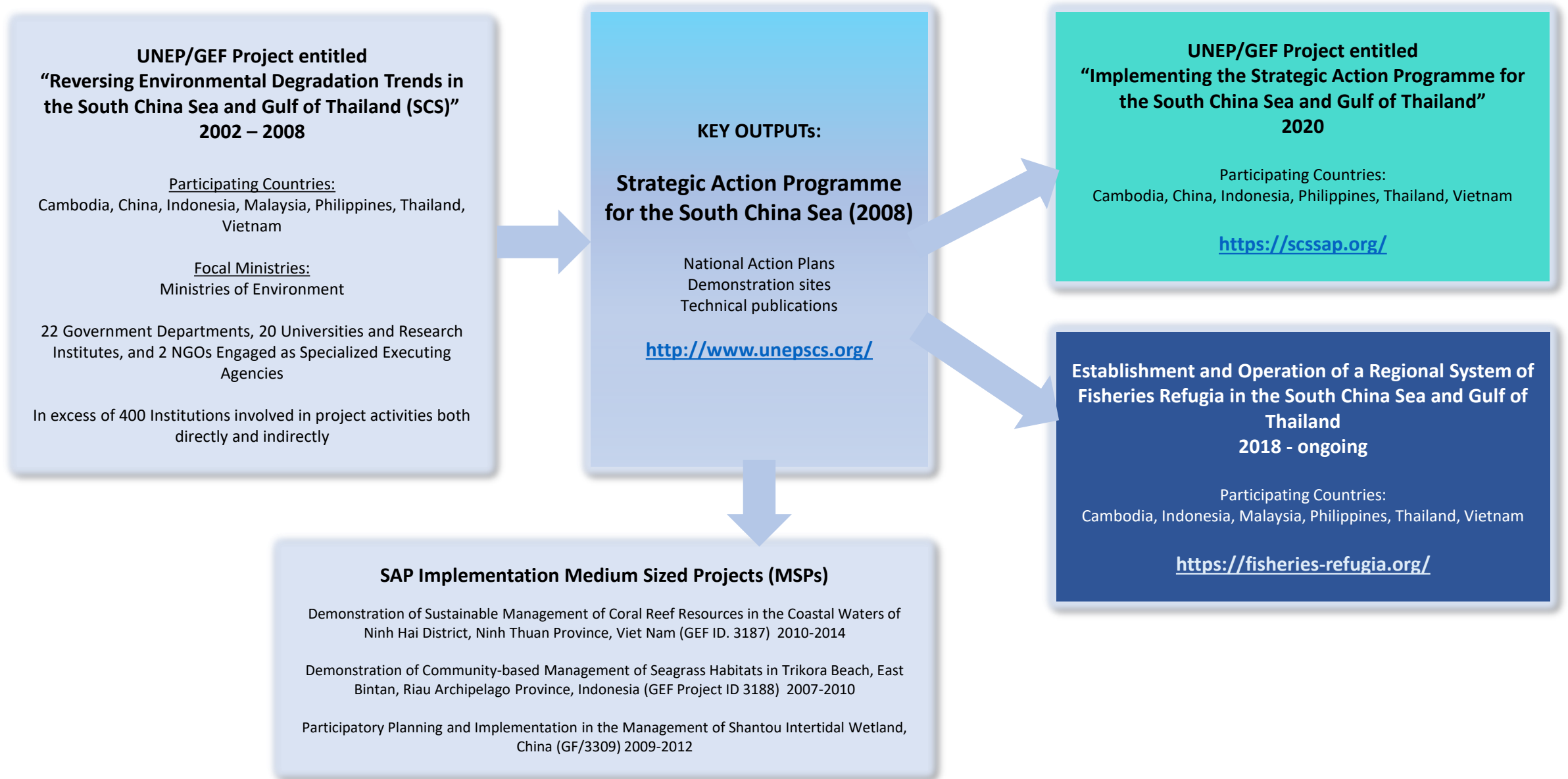


South China Sea and Gulf of Thailand, from original project and SAP, to current implementation



Strategic Action Programme for the South China Sea (SCS SAP) - Targets

MANGROVES (National Actions)

- Area to be transferred to National Parks and Protected Area status - 57,361 ha; Non-conversion of mangrove but sustainable use - 166,600 ha; Improved management relating to sustainable use - 602,772; Replanting of deforested mangrove land - 21,000; Enrichment planting to increase mangrove biodiversity - 11,200

CORAL REEFS (National Actions)

- At least 70% of the existing area of coral reefs in the 82 target coral reef sites (153,000 ha) to be put under an appropriate form of sustainable management;
- Reduce the regional decadal rate of degradation in live coral cover from the present rate of 16% to 5%.

SEAGRASS (National Actions)

- Twenty-one managed areas totalling 26,576 hectares (approximately 33% of the 78,332 hectares identified as seagrass sites) in the South China Sea, to be brought under sustainable management; Government recognition of the ecological importance of seagrass through amendment of the management plans for seven existing MPAs with significant areas of seagrass habitat, to include specific seagrass-related management actions; Adoption of 7 new Marine Protected Areas specifically focussing on seagrass habitats identified in the prioritised listings of the SCS Project

WETLANDS (National Actions)

- to set up or update management plans for at least three lagoons, nine estuaries, five tidal flats, one peat swamp and one non-peat swamp in the South China Sea; to increase by at least 7 wetland areas, the number of sites or specified wetland areas with protection status (i.e. non-hunting area, nature reserves, protected areas, Ramsar Sites, etc); to have a regional estuary monitoring scheme implemented in the participating countries

LAND BASED POLLUTION (Regional actions)

- estimate total contaminant loading to the South China Sea; agree and adopt regional criteria for contaminants in sediment and biota; characterise and prioritise all hot spots surrounding the South China Sea; review and prepare recommendations for application in amending national/provincial, legislation/regulations in support of all Land-based Pollution targets of the SAP.
- to meet ASEAN seawater quality (14 parameters) criteria (except pollutants from scientifically identified natural sources, if any) for: - 90% of monitoring stations in the 17 hot spots characterised by the RWG-LbP between 2002 – 2004;- 80% of other monitoring stations (more than 400 at present) in coastal waters of the South China Sea.

REGIONAL ECONOMIC VALUES AND COST/BENEFIT ANALYSIS OF SAP ACTIONS

Regional actions, science, tools, guidelines and capacity building for habitats

REGIONAL CO-OPERATION

Objective to create an environment at the regional level, in which collaboration and partnership in addressing environmental problems of the South China Sea, between all stakeholders, and at all levels is fostered and encouraged; and to enhance the capacity of the participating governments to integrate environmental considerations into national development planning

FISH HABITAT AND FISH STOCKS

- to have established a regional system of a minimum of twenty refugia for the management of priority, transboundary, fish stocks and endangered species;
- to have prepared and implemented fisheries management systems in the identified refugia based on, and consistent with, the ASEAN SEAFDEC Regional Guidelines for Responsible Fisheries in Southeast Asia.

Implementing the Strategic Action Programme for the South China Sea and Gulf of Thailand

Component 1. Reducing habitat degradation and loss via national and local reforms to achieve Strategic Action Programme targets for coastal habitat management in the South China Sea

- Outcome 1.1 Appropriate forms of sustainable management established for 860,000 ha of mangrove by Yr
- Outcome 1.2 153,000 ha of coral reef at 82 priority sites managed sustainably by Yr 5, including a reduction in the decadal rate of degradation in live coral cover from 16 to 5%
- Outcome 1.3 Conservation, management and sustainable use of 25,900 ha of known seagrass area in the South China Sea by Yr
- Outcome 1.4 Integrated management of 783,900 ha of coastal wetland at 19 sites, including habitat restoration and protection strengthened at priority locations
- Outcome 1.5 National and regional level cooperation in tracking results of SAP actions for coastal habitat management

Component 2. Strengthening knowledge-based action planning for the management of coastal habitats and land-based pollution to reduce environmental degradation of the South China Sea

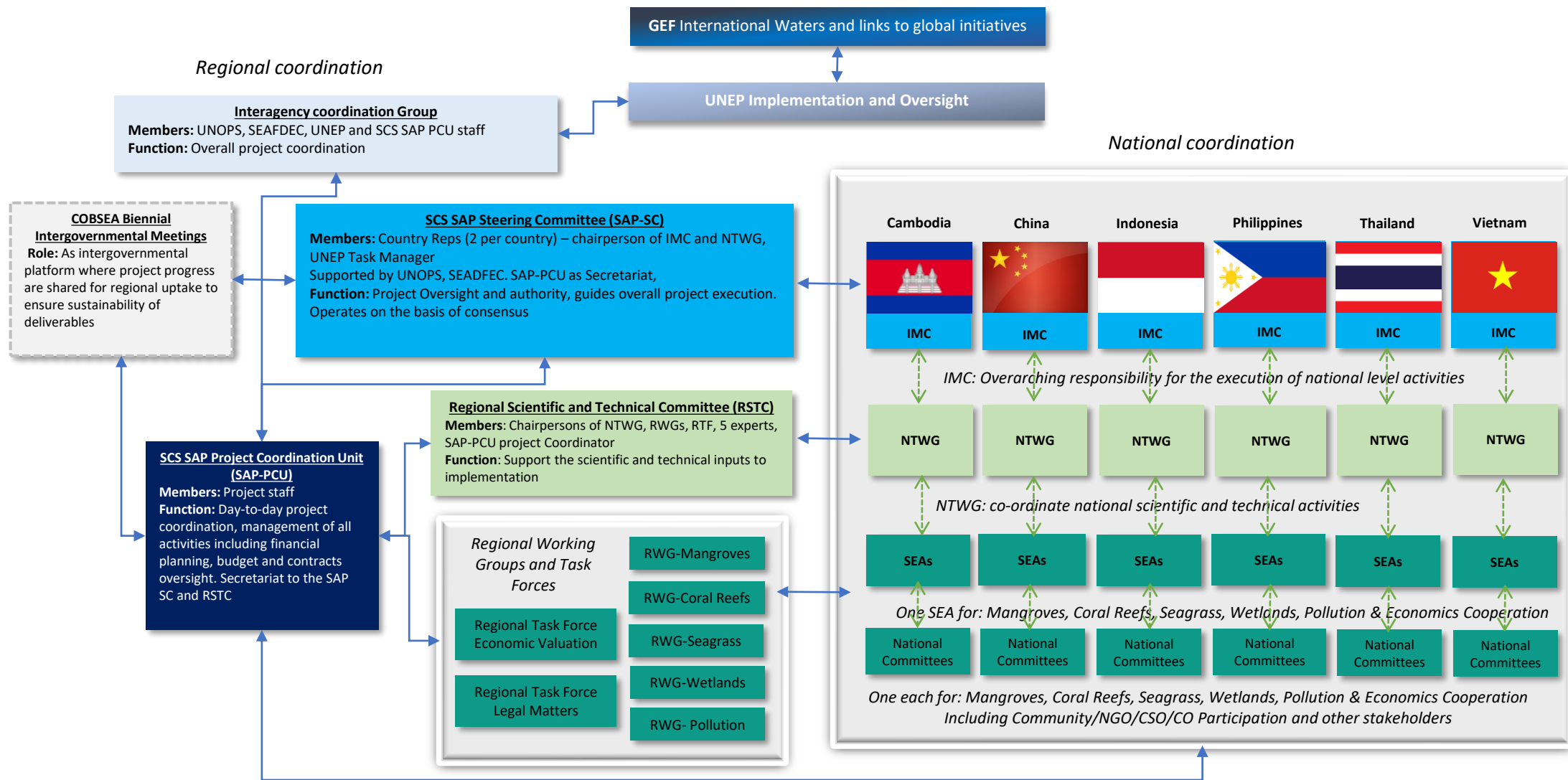
- Outcome 2.1 Enhanced information-base for coastal habitat management, monitoring and action planning
- Outcome 2.2 Effective integration of regional science in the management of land-based pollution
- Outcome 2.3 Strengthened and harmonized national policies and laws, and supporting financial mechanism, for the management of habitats and land-based sources of pollution
- Outcome 2.4 Improved national and regional values for the Updated Total Economic Values of coastal habitats for use in development planning and decision-making and blue economy
- Outcome 2.5 Regionally appropriate tools and mechanisms to guide the development of sustainable management systems for coastal habitats and land-based pollution
- Outcome 2.6 Updated and Ministerially adopted Transboundary Diagnostic Analysis and Strategic Action Programme, including prioritization of national management actions to address climate variability and change

Component 3. Facilitating regional and national level integration and cooperation for implementation of the South China Sea Strategic Action Programme

- Outcome 3.1 Regional and sub-regional co-operation in the integration of scientific knowledge and research outputs with management and policy making
- Outcome 3.2 Capacity for civil society and community organization participation in SAP implementation strengthened via operational partnership with GEF SGP
- Outcome 3.3 Relationships between central and local governments and the private sector strengthened and formalized
- Outcome 3.4 Revitalization of regional mechanisms for communications, knowledge exchange, and information and data management and sharing
- Outcome 3.5 Agreed arrangements for strengthened regional cooperation in the management of the marine and coastal environment of the South China Sea

Establishment and Operation of a Regional System of Fisheries Refugia in the South China Sea and Gulf of Thailand

This specific project objective is 'to operate and expand the network of fisheries refugia in the South China Sea and Gulf of Thailand for the improved management of fisheries and critical marine habitats linkages in order to achieve the medium and longer-term goals of the fisheries component of the Strategic Action Programme for the South China Sea



IMC = Inter-Ministry Committee; NTWG = National Technical Working Group; National Committee = Specialized Executing Agency; RWG= Regional Working Group

SCS-SAP Organogram

National Inter-Ministry Committee (IMC)

1. Assume overarching responsibility for the execution of national level activities
2. Receive, review, and approve reports from the National Technical Working Groups and National Committees for mangroves, coral reefs, seagrass, wetlands, land-based pollution, and economic valuation regarding the outputs and outcomes of efforts to achieve Strategic Action Programme targets;
3. Meet on a **biannual basis** during the operational phase of the project to guide the timely execution of project activities, particularly activities at the site level, and to consider, amend and endorse quarterly work-plans, narrative progress and financial reports for submission to the regional SCS-SAP Implementation Unit;
4. Provide direction and strategic guidance to the National Technical Working Group and National Committees for mangroves, coral reefs, seagrass, wetlands, land-based pollution, and economic on the national and local reforms to achieve SAP targets and mainstream best practices in to natural resource and environmental management of the South China National Committee and Gulf of Thailand marine basin;
5. Review planned and ongoing coastal and marine environment projects being operated along the South China National Committee and Gulf of Thailand coast with the aim of minimising duplication of efforts, and to identify opportunities for cooperation and the sharing of examples of best practices in reversing environmental degradation trends;
6. Assess stakeholder involvement in national level execution of the SCS SAP Implementation project and take action where necessary to ensure appropriate levels of government, civil society and community organisation, environmental NGOs, Women's groups, and private sector engagement in project activities.
7. Ensure compatibility between site-based activities of the SCS SAP Implementation project and other National, provincial and municipal activities in coastal and marine environmental management;
8. Approve annual progress reports for transmission to the COB National Committee Intergovernmental Meetings, UNEP and the GEF Secretariat;
9. Assist the National Committees for mangroves, coral reefs, seagrass, wetlands, land-based pollution, and economic valuation in securing co-financing committed to the project and in leveraging additional funding that may be required from time to time.
10. Agree at their first meeting:
 - a) the membership, meeting arrangements, and terms of reference of the committee; and
 - b) such standing orders and manner of conducting business as may be considered necessary by the committee.

<i>Cambodia IMC</i>	<i>China IMC</i>	<i>Indonesia IMC</i>	<i>Philippines IMC</i>	<i>Thailand IMC</i>	<i>Vietnam IMC</i>
Chairperson Ministry of Environment	Chairperson Ministry of Ecology and Environment	Chairperson Ministry of Environment and Forestry	Chairperson Department of Environment and Natural Resources	Chairperson Ministry of Natural Resources and Environment	Chairperson Ministry of Environment and Natural Resources
Other Ministries' Membership will be discussed and agreed at the first IMC meeting	Other Ministries' Membership will be discussed and agreed at the first IMC meeting	Other Ministries' Membership will be discussed and agreed at the first IMC meeting	Other Ministries' Membership will be discussed and agreed at the first IMC meeting	Other Ministries' Membership will be discussed and agreed at the first IMC meeting	Other Ministries' Membership will be discussed and agreed at the first IMC meeting

National Level – Inter-Ministry Committee (IMC)

National Technical Working Groups (NTWG)

One National NTWG per country including all SEA National Focal Point

1. Review and co-ordinate national scientific and technical activities of the UNEP/GEF project entitled "Implementing the Strategic Action Programme for the South China Sea" in [country name];
2. Review and evaluate, from a scientific and technical perspective, progress in the achievement of Strategic Action Programme targets, and provide guidance for improvement when necessary;
3. Provide the National Inter-Ministry Committees with recommendations on proposed national and site-based activities, work plans, and budgets;
4. Provide the National Inter-Ministry Committees with technical guidance and suggestions to improve project activities where necessary, including the reform of policy, legislation and institutional arrangements;
5. Facilitate co-operation with relevant national and provincial organisations and projects to enhance the information and science base for use in achieving Strategic Action Programme targets and in preparing updated National Action Plans and a revised Strategic Action Programme in [country name];
6. Compile and evaluate national level sources of information and data for sharing at the regional level;
7. Receive, and review reports, data and information from site-based activities of the project and oversee the national synthesis of this information to identify overall needs and priorities for individual sites and future targets for mangroves, coral reefs, seagrass, wetlands, and land-based pollution management in [country name];
8. Ensure that planned national level project activities are consistent with the national results framework for the project, and that the subsequent monitoring and reporting of project results is undertaken in a standardized and consistent manner;
9. Agree at their first meeting:
10. a) the membership, meeting arrangements, and terms of reference of the committee; and
11. b) such standing orders and manner of conducting business as may be considered necessary by the committee.

Cambodia NTWG	China NTWG	Indonesia NTWG	Philippines NTWG	Thailand NTWG	Vietnam NTWG
Chairperson	Chairperson	Chairperson	Chairperson	Chairperson	Chairperson
SEA National Focal Point - Mangroves	SEA National Focal Point - Mangroves	SEA National Focal Point - Mangroves	SEA National Focal Point - Mangroves	SEA National Focal Point - Mangroves	SEA National Focal Point - Mangroves
SEA National Focal Point - Coral Reefs	SEA National Focal Point - Coral Reefs	SEA National Focal Point - Coral Reefs	SEA National Focal Point - Coral Reefs	SEA National Focal Point - Coral Reefs	SEA National Focal Point - Coral Reefs
SEA National Focal Point - Seagrass	SEA National Focal Point - Seagrass	SEA National Focal Point - Seagrass	SEA National Focal Point - Seagrass	SEA National Focal Point - Seagrass	SEA National Focal Point - Seagrass
SEA National Focal Point - Wetlands	SEA National Focal Point - Wetlands	SEA National Focal Point - Wetlands	SEA National Focal Point - Wetlands	SEA National Focal Point - Wetlands	SEA National Focal Point - Wetlands
SEA National Focal Point - Land-based pollution	SEA National Focal Point - Land-based pollution	SEA National Focal Point - Land-based pollution	SEA National Focal Point - Land-based pollution	SEA National Focal Point - Land-based pollution	SEA National Focal Point - Land-based pollution
SEA National Focal Point - Economic valuation	SEA National Focal Point - Economic valuation	SEA National Focal Point - Economic valuation	SEA National Focal Point - Economic valuation	SEA National Focal Point - Economic valuation	SEA National Focal Point - Economic valuation
Other experts as required	Other experts as required	Other experts as required	Other experts as required	Other experts as required	Other experts as required

National Technical Working Groups (NTWG)

Specialized Executing Agencies (SEAs) for mangroves, coral reefs, seagrass, wetlands, land-based pollution and economic valuation

36 SEA's each responsible for execution of the national activities and coordination of the national Committees

1. Assume overall responsibility for the execution of the national-level activities in their respective areas of expertise for the UNEP/GEF project entitled 'Implementing the Strategic Action Programme for the South China Sea' in accordance with the results framework contained in the regional UNEP Project Document;
2. Provide Secretariat support to the operation of the National Committees for mangroves, coral reefs, seagrass, wetlands, land-based pollution, and economic valuation and convene quarterly meetings of these bodies, respectively;
3. Nominate a National Focal Point to (a) act as the main point of contact with the SCS SAP Implementation Unit and UNEP; (b) act as Chair of the his/her respective National Committee; (c) act as a member of NTWG; and (d) act as a member of the respective Regional Working Group or Task Force;
4. Plan and implement activities based on the results framework, work plan and timetable contained in the UNEP Project Document aimed at achieving the national-level goals and targets of the project and the Strategic Action Programme for the South China Sea;
5. Prepare and facilitate endorsement, by the National Inter-Ministry Committee (IMC), quarterly costed work plans to guide the execution of national and site-based activities of the project;
6. Submit endorsed quarterly national costed work plans to the Project Coordinator of the SCS-SAP Implementation Unit within five (5) working days before the end of each quarter (i.e. Quarter 1 is January-March, Quarter 2 is April-June, Quarter 3 is July-September, Quarter 4 is October-December).
7. Prepare and submit quarterly progress reports, expenditure reports, and cash advance requests for endorsement by the National Inter-Ministry Committee and subsequent submission to the Project Coordinator of the SCS-SAP Implementation Unit within five (5) working days before the end of each quarter;
8. Prepare annual progress reports on national-level activities and results of efforts to meet SAP targets;
9. Maintain accurate and up-to-date records and documents in respect of all expenditures incurred with the funds made available to ensure that all expenditures are in conformity with the provisions of the endorsed costed work plans. For each disbursement, proper supporting documentation shall be maintained, including original invoices, bills, and receipts pertinent to the transaction.
10. Provide the SCS-SAP Implementation Unit with certified periodic financial statements, and with an annual audit of the financial statements relating to the status of project funds advanced to the Specialized Executing Agency;
11. Be responsible for the proper custody, maintenance and care of all equipment purchased for use at the national level;
12. Lead national-level efforts to secure co-financing committed to this project and to leverage additional funding required to replicate and scale-up best practices in coastal and marine environmental management generated through this project; and
13. Ensure that the work of the parties under this agreement is suitably promoted as part of the UNEP/GEF project entitled 'Implementing the Strategic Action Programme for the South China Sea', including labelling of outputs with agreed logos.

<i>Cambodia</i>	<i>China</i>	<i>Indonesia</i>	<i>Philippines</i>	<i>Thailand</i>	<i>Vietnam</i>
Specialized Executing Agency for Mangroves	Specialized Executing Agency for Mangroves	Specialized Executing Agency for Mangroves	Specialized Executing Agency for Mangroves	Specialized Executing Agency for Mangroves	Specialized Executing Agency for Mangroves
Specialized Executing Agency for Coral Reefs	Specialized Executing Agency for Coral Reefs	Specialized Executing Agency for Coral Reefs	Specialized Executing Agency for Coral Reefs	Specialized Executing Agency for Coral Reefs	Specialized Executing Agency for Coral Reefs
Specialized Executing Agency for Seagrass	Specialized Executing Agency for Seagrass	Specialized Executing Agency for Seagrass	Specialized Executing Agency for Seagrass	Specialized Executing Agency for Seagrass	Specialized Executing Agency for Seagrass
Specialized Executing Agency for Wetlands	Specialized Executing Agency for Wetlands	Specialized Executing Agency for Wetlands	Specialized Executing Agency for Wetlands	Specialized Executing Agency for Wetlands	Specialized Executing Agency for Wetlands
Specialized Executing Agency for Land-based pollution	Specialized Executing Agency for Land-based pollution	Specialized Executing Agency for Land-based pollution	Specialized Executing Agency for Land-based pollution	Specialized Executing Agency for Land-based pollution	Specialized Executing Agency for Land-based pollution
Specialized Executing Agency for Economic valuation	Specialized Executing Agency for Economic valuation	Specialized Executing Agency for Economic valuation	Specialized Executing Agency for Economic valuation	Specialized Executing Agency for Economic valuation	Specialized Executing Agency for Economic valuation

National Level – Specialized Executing Agencies (SEAs)

National Committees for mangroves, coral reefs, seagrass, wetlands, land-based pollution and economic valuation

Six Committees established for each country (total of 36 committees) chaired by the relevant SEA Focal Point and including technical experts, (10-20), and all relevant stakeholders including community organizations, non-governmental organizations etc.

1. Provides guidance to the National Committee to ensure that national activities are executed in full partnership with all relevant stakeholders;
2. Meets every six months minimum to discuss progress and obstacles and agree on support to be provided to the National Committee to ensure successful execution of activities and long term sustainability of activities;
3. Ensure that national activities are supported by local government, key institutions, local communities and private sector if appropriate to ensure continuation and sustainability beyond the projects lifespan

<i>Cambodia</i>	<i>China</i>	<i>Indonesia</i>	<i>Philippines</i>	<i>Thailand</i>	<i>Vietnam</i>
Cambodia National Committee Mangroves	China National Committee Mangroves	Indonesia National Committee Mangroves	Philippines National Committee Mangroves	Thailand National Committee Mangroves	Vietnam National Committee Mangroves
Cambodia National Committee Coral Reefs	China National Committee Coral Reefs	Indonesia EA Coral Reefs	Philippines National Committee Coral Reefs	Thailand National Committee Coral Reefs	Vietnam National Committee Coral Reefs
Cambodia National Committee Seagrass	China National Committee Seagrass	Indonesia National Committee Seagrass	Philippines National Committee Seagrass	Thailand National Committee Seagrass	Vietnam National Committee Seagrass
Cambodia National Committee Wetlands	China National Committee Wetlands	Indonesia National Committee Wetlands	Philippines National Committee Wetlands	Thailand National Committee Wetlands	Vietnam National Committee Wetlands
Cambodia National Committee land-based pollution	China National Committee land-based pollution	Indonesia National Committee land-based pollution	Philippines National Committee land-based pollution	Thailand National Committee land-based pollution	Vietnam National Committee land-based pollution
Cambodia National Committee Economic valuation	China National Committee Economic valuation	Indonesia National Committee Economic valuation	Philippines National Committee Economic valuation	National Committee Economic valuation	Vietnam National Committee Economic valuation

National Level –National Committees

SCS SAP Steering Committee (SAP-SC)

Will be a permanent sub-committee which shall meet annually and provide overall guidance to the implementation of the SAP and decisions regarding project work plans, timetables, budgets and expenditure. As the **Project Steering Committee** or **Project Board**, its role is to:

- provide managerial and governance advice to the project, and to guide the SAP-Implementation Unit (SAP-PCU) in the implementation and monitoring of the overall regional project
- provide a regional forum for reviewing and resolving national concerns, reviewing and approving annual work plans and budgets, and provide a regional forum for stakeholder participation
- review and approval of reports from the SAP-PCU regarding the outputs and outcomes of project activities
- assist the SAP-PCU in ensuring co-ordination among national site-based activities and other national level activities to further enhance national capacity to achieve the targets
- review stakeholder involvement in project activities and take action where necessary to ensure appropriate levels of engagement
- assist the SAP-PCU in leveraging required project co-financing and additional funds that may be required from time to time; and work with the SAP-PCU and National Lead Agencies in mainstreaming best practices and the replication of project successes at the national level

Membership: members of the SC shall consist of two representatives from each of the participating countries in the project, i.e. Chairperson of the policy-level IMC, and Chairperson of the NTWG. UNEP Task Manager will participate in the meetings, the Project Coordinator of SAP-PCU shall act as the Secretary to the meetings, and UNOPS will be an ex-officio member.

Supported by UNEP, UNOPS, SEADFEC. SAP-PCU as Secretariat,

Non-voting members: To be agreed at first meeting of the SAP-SC

Members

Cambodia
Chair-IMC

Cambodia
Chair-NTWG

China
Chair-IMC

China
Chair-NTWG

Indonesia
Chair-IMC

Indonesia
Chair-NTWG

Philippines
Chair-IMC

Philippines
Chair-NTWG

Thailand
Chair-IMC

Thailand
Chair-NTWG

Vietnam
Chair-IMC

Vietnam
Chair-NTWG

Observers/ Support

UNEP Task
Manager

SCS SAP PCU
Coordinator
(as Secretary)

UNOPS

SEADFEC

Others as
appropriate to
be agreed

Regional Level - Implementation Committee

Regional Scientific and Technical Committee (RSTC)

Responsible for: overseeing the scientific and technical elements of the project; ensuring effective implementation of activities undertaken during project execution; and providing sound scientific and technical advice to the SCS-SAP Implementation Committee. The RSTC will also be responsible for ensuring that scientific and technical aspects of SCS-SAP Implementation project meet International standards. Specifically, it will review the substantive activities of the project to: (1) reduce habitat degradation and loss via national and local reforms to achieve Strategic Action Programme targets for coastal habitat management in the South China Sea; (2) strengthen knowledge-based planning for the management of coastal habitats and land-based pollution to reduce environmental degradation of the South China Sea; and (3) facilitate regional and national level integration and cooperation for implementation of the South China National Committee Strategic Action Programme.

Membership: The Chairpersons of the National Technical Working Groups (NTWGs); the Chairpersons of the Regional Working Groups (RWGs) and Regional Task Forces (RTFs); up to 5 selected regional experts; and the SCS-SAP PCU Project Coordinator , who shall act as the Secretary to the meetings.

The SCS-SAP Implementation Unit, in consultation with National Technical Focal Points, shall nominate no more than 5 regional experts to ensure a balance of expertise and specialisation consistent with the mandate of the Committee. The membership of the RSTC shall be formally established at the first meeting of the committee.

At the commencement of each meeting the committee shall elect a Chairperson and a Vice-Chair from amongst the members. The Vice-Chair shall act as Chairperson of meetings in the absence of the Chairperson. The Chairperson and Vice-Chair shall participate in the annual meetings of the SCS-SAP Implementation Committee at which they shall present the reports and recommendations of the RSTC.

Members

Cambodia
Chair-NTWG

Chair
RWG-Mangroves

China
Chair-NTWG

Chair
RWG-Coral Reefs

Indonesia
Chair-NTWG

Chair
RWG-Seagrass

Philippines
Chair-NTWG

Chair
RWG- Pollution

Thailand
Chair-NTWG

Chair
RWG-Wetlands

Vietnam
Chair-NTWG

Regional Task Force
Economic Valuation

SCS SAP PCU
Coordinator

Regional Task Force
Policy reforms

1 to 5 regional experts

Regional Scientific and Technical Committee (RSTC)

Regional Working Group - Mangroves, Coral Reefs, Seagrass, Wetlands Land based pollution

The RWGs were charged with co-ordinating the work of National Committees in order to ensure the effective execution of activities in the various project components. Specific RWG activities included inter alia: development of criteria for determining the global, regional and transboundary significance of habitats and fish stocks; coordination of efforts to develop national meta-databases; compilation and review of information relating to economic valuation; and the stepwise review of information and data compiled by national committees. The RSTC was mandated to coordinate and review the work of the RWGs and provide sound scientific and technical advice to the inter-governmental Project Steering Committee (PSC) regarding SAP formulation.

The RWG of the SCS-SAP Implementation Project shall consist of the **Chairpersons of the National Mangrove Coral Reefs, Seagrass, Wetlands, Land based pollution Committees together with one member of the SCS-SAP Implementation Unit and selected regional experts**. The SCS-SAP Implementation Unit in consultation with the National Technical Focal Points for the project shall nominate no more than four such experts to ensure a balance of expertise and specialisation consistent with the mandate of the working group.

The membership of the RWG-M shall be formally established at the first meeting of the Working Group, which shall elect a Chairperson and a Vice-Chair from amongst its members. The Vice-Chair shall act as Chairperson of meetings in the absence of the Chairperson. The Chairperson of the RWG-M will represent the RWG-M on the Regional Scientific and Technical Committee (RSTC) and will attend the meetings of that Committee.

<i>RWG-Mangroves</i>	<i>RWG-Coral Reefs</i>	<i>RWG-Seagrass</i>	<i>RWG-Wetlands</i>	<i>RWG-Land based pollution</i>
Cambodia Chairperson of the National Mangrove Committee	Cambodia Chairperson of the National Coral Reef Committee	Cambodia Chairperson of the National Seagrass Committee	Cambodia Chairperson of the National Wetland Committee	Cambodia Chairperson of the National land based pollution Committee
China Chairperson of the National Mangrove Committee	China Chairperson of the National Coral Reef Committee	China Chairperson of the National Seagrass Committee	China Chairperson of the National Wetland Committee	China Chairperson of the National land based pollution Committee
Indonesia Chairperson of the National Mangrove Committee	Indonesia Chairperson of the National Coral Reefs Committee	Indonesia Chairperson of the National Seagrass Committee	Indonesia Chairperson of the National Wetland Committee	Indonesia Chairperson of the National land based pollution Committee
Philippines Chairperson of the National Mangrove Committee	Philippines Chairperson of the National Coral Reefs Committee	Philippines Chairperson of the National Seagrass Committee	Philippines Chairperson of the National Wetland Committee	Philippines Chairperson of the National land based pollution Committee
Thailand Chairperson of the National Mangrove Committee	Thailand Chairperson of the National Coral Reefs Committee	Thailand Chairperson of the National Seagrass Committee	Thailand Chairperson of the National Wetland Committee	Thailand Chairperson of the National land based pollution Committee
Vietnam Chairperson of the National Mangrove Committee	Vietnam Chairperson of the National Coral Reefs Committee	Vietnam Chairperson of the National Seagrass Committee	Vietnam Chairperson of the National Wetland Committee	Vietnam Chairperson of the National land based pollution Committee
SCS-SAP Implementation Unit	SCS-SAP Implementation Unit	SCS-SAP Implementation Unit	SCS-SAP Implementation Unit	SCS-SAP Implementation Unit
Selected Regional Experts	Selected Regional Experts	Selected Regional Experts	Selected Regional Experts	Selected Regional Experts

Regional Working Groups

Regional Task Force on Economic Valuation

The Regional Task Force on Economic Valuation (RTF-E) is re-established with the primary objective of advising and supporting the national committees and regional working groups by providing the appropriate expertise and assistance in completing the envisaged economic valuations and cost-benefit analyses. It is anticipated that the operation of the RTF-E will contribute significantly to the achievement of the following targets:

- Expanded datasets of economic valuation information on the goods and services of SCS coastal habitats;
- Estimates of the value for the service provided by coastal habitats as nursery areas for coastal fish and crustaceans;
- Estimates of economic losses of coastal ecosystem goods and services consequent upon coastal shipping accidents and pollution damage; and
- Updated estimates of Total Economic Values for coastal habitats of the SCS and converted to 2017 value by means of the consumer price index

Membership - The Task Force will be comprised of: one environmental or resource economist, nominated by each of the participating countries; and two regional, environmental economic experts; all of whom will serve as members in their personal capacity. Each participating country will nominate these members, in accordance with procedures agreed by the SCS-SAP Implementation Committee. The membership of the committee will be established at its first meeting, at which a Chairperson, a Vice-Chairperson and Rapporteur will be elected from the members. The Vice-Chairperson will act as Chairperson of meetings in the absence of the Chairperson.

Regional Task Force on Legal Matters

The Regional Task Force on Legal Matters (RTF-L) is re-established with the primary objective of advising and supporting the national committees and regional working groups by providing the appropriate expertise and assistance in legal aspects of the project

Membership - The Task Force will be comprised of: one policy expert, nominated by each of the participating countries; and two legal experts; all of whom will serve as members in their personal capacity. Each participating country will nominate these members, in accordance with procedures agreed by the SCS-SAP Implementation Committee. The membership of the committee will be established at its first meeting, at which a Chairperson, a Vice-Chairperson and Rapporteur will be elected from the members. The Vice-Chairperson will act as Chairperson of meetings in the absence of the Chairperson.

RTF-Economic Valuation

Cambodia
Chairperson of the National
Economic Valuation
Committee

China
Chairperson of the National
Economic Valuation
Committee

Indonesia
Chairperson of the National
Economic Valuation
Committee

Philippines
Chairperson of the National
Economic Valuation
Committee

Thailand
Chairperson of the National
Economic Valuation
Committee

Vietnam
Chairperson of the National
Economic Valuation
Committee

Two Selected Regional
Experts

RTF-Legal Matters

Cambodia
Policy Expert

China
Policy Expert

Indonesia
Policy Expert

Philippines
Policy Expert

Thailand
Policy Expert

Vietnam
Policy Expert

Two Selected Regional
Experts

Regional Level - Regional Task Forces