



Implementing the Strategic Action Programme for THE SOUTH CHINA SEA AND GULF OF THAILAND (SCS SAP) Project

Second Roundtable of Local Representatives of the SCS SAP Project

17 September, 2025, Jakarta, Indonesia

Chart on Practices and Lessons Learnt at the Site/local Level

Lingshui Xincun Lagoon & Li'an Lagoon, China

ZHOU Zhiqin





Overview of Lingshui Xincun Lagoon & Li'an Lagoon

Area & Population

- ~32 km² total area
- ~60,000 residents

Key Habitats

- Seagrass beds: 200+ ha
- Mangroves: 400+ ha
- Coral reefs: recovery begins

Main Economic Activities

- Floating aquaculture cages
- Aquatic seedling breeding
- Tourism

Indigenous Community

Tanka fishing village — largest in China, listed as Traditional Village



Major Threats

- Pollution from aquaculture
- Destructive fishing gears & overfishing
- Mass shore foraging
- Rapid spread of exotic mangrove species

Environmental Concerns

- Water quality deterioration
- Seagrass beds degraded & coral reefs damaged
- Benthic fauna disturbed by intensive shore foraging
- Decline of native mangrove species due to invasive species expansion

Key Habitats Distribution Map

Seagrass beds



Mangroves



Key Activities for Conservation & Sustainable Use

Establishment of Protected Areas

- National Mangrove Wetland Park (est. 2017)
- Special Reserve for Seagrass Beds (est. 2007)

Aquaculture Adjustment

- Large-scale pond reduction
- Reduction of floating cages

Ecological Restoration

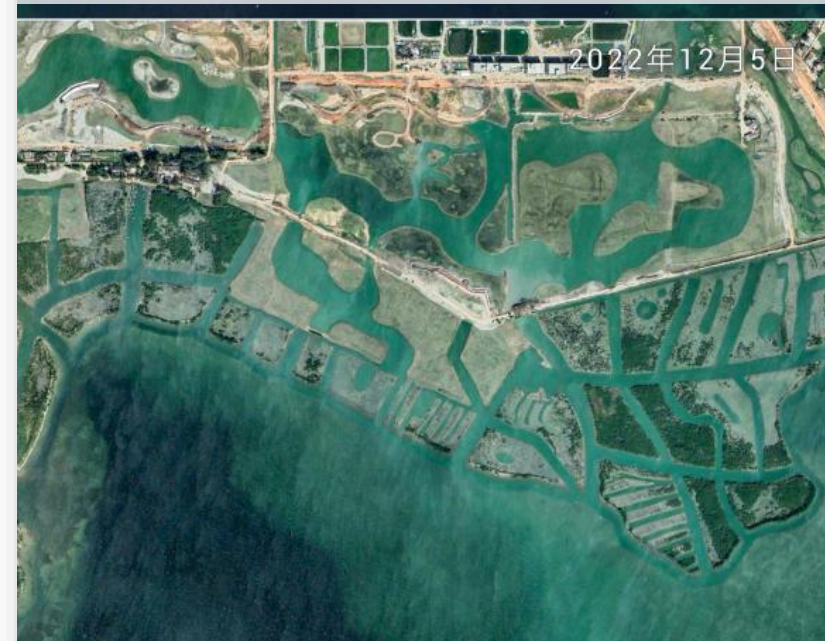
- Mangrove planting
- Seagrass bed enhancement
- Shellfish stock enhancement

Pollution Control

- Comprehensive pollution source survey
- Construction of sewage collection networks
- New wastewater treatment plants



2016



2022

Highlights of key achievements

Habitat Restoration

- Pond reduction ~670 ha
- 32,000 floating cages removed
- Mangrove restored ~400 ha
- Shellfish stock enhancement ~200 ha
- Naturalized shoreline ~5.7 km

Water Quality Improvement

- Li'an Lagoon: >98% Class I seawater
- Xincun Lagoon: >90% Class II seawater

Biodiversity Recovery

- Sandworms reappeared, benthic habitat improved
- Eurasian Spoonbill and Great Knot observed, both nationally protected species

Sustainable Livelihoods

- Floating cages → guesthouses & fishing platforms
- Combined “onshore & deep-sea” strategy: tropical seedling breeding & deep-sea aquaculture

Community Engagement

- Restaurants install wastewater treatment
- Fisher cooperatives participate in operations



Lagoons Today – At a Glance
(Mangroves)

Lagoons Today – At a Glance

(Seagrass beds)






Lagoons Today – At a Glance
(Early signs of coral reef recovery)



Lagoons Today – At a Glance
(Hainan Tanka Museum)



Challenges and solution to address challenges

Livelihood Transition | Post-compensation income decline

→ Need sustainable alternatives to reduce lagoon dependence

Sustainable use vs. overuse

→ Define ecological carrying capacity (fishing & tourism)

→ Establish management system for reasonable use

→ Regular environmental education for communities & visitors

Coordinated Development

→ Balance aquaculture, floating cages, tourism & conservation

→ Cross-sector collaboration for win-win outcomes

Habitat Restoration

Seagrass: slow recovery → need habitat enhancement

Coral reefs: early regrowth → monitoring & pilot restoration



Thank you !