



# Implementing the Strategic Action Programme for THE SOUTH CHINA SEA AND GULF OF THAILAND (SCS SAP) Project

## Second Roundtable of Local Representatives of the SCS SAP Project

17 September, 2025, Jakarta, Indonesia

Chart on Practices and Lessons Learnt at the Site/local Level

## Sichang and Lan islands, Thailand

Nitchanan Khaengkhan

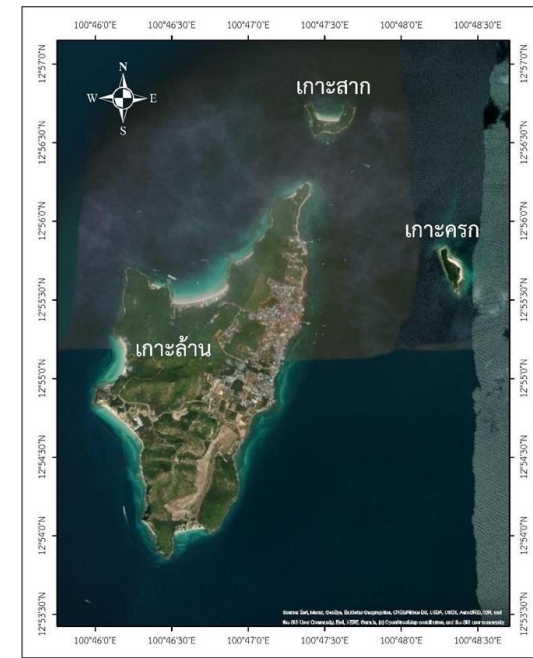
Fishery Operation Officer, Marine and Coastal Resources Office 2

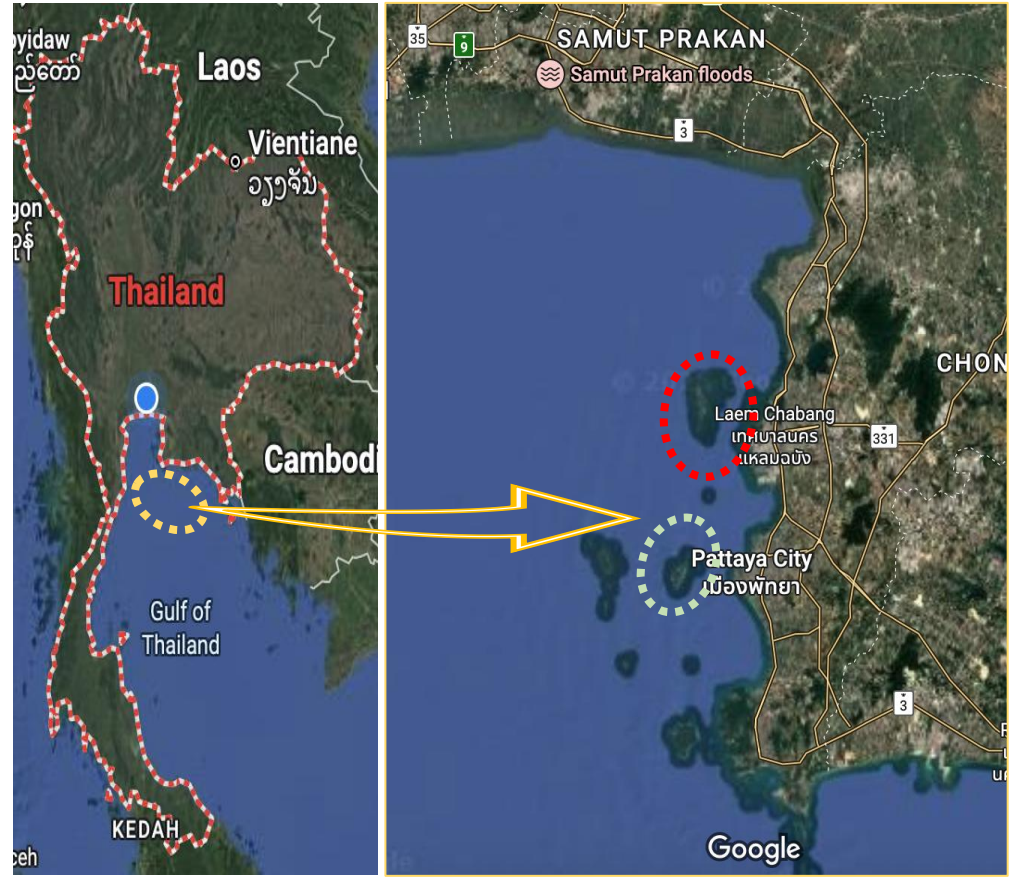






## About Sichang and Lan Islands

Parameter	Sichang island	Lan island
Area (km <sup>2</sup> )	17.3 km <sup>2</sup>	4.7 km <sup>2</sup>
Population	~4,560 residents	2,924 residents, ~2,000 migrants
Specific Indigenous Feature	Traditional fishing communities	Tourism-based local community
Coral Reef Area (km <sup>2</sup> )	0.28 km <sup>2</sup>	1.34 km <sup>2</sup>
Main Economic Activities	Fisheries, tourism, maritime proximity	Tourism (beaches, water activities), small-scale fishing
Threats	Development, overfishing, port traffic	Tourism overload, waste accumulation
Environmental Concerns	Moderate-risk reefs, habitat stress	Waste crisis, habitat degradation, resource pressure





-  Sichang Island
-  Lan Island

## Highlights of key activities for conservation & sustainable use of coastal habitat and/or fisheries & land-based pollution management

### • Marine Spatial Planning (MSP) Pilots

- Establishment of working groups for integrated marine use planning.
- Stakeholder consultations and policy drafting for reef use and protection.

### • Capacity Building & Community Engagement

- Trainings for local communities, government officers, and tourism operators (50+ participants per event).
- Formation of volunteer monitoring and surveillance groups.

### • Reef & Habitat Management

- Reef monitoring and surveillance (regular patrols).
- Artificial reef assessment and socio-economic surveys.
- Deployment of demarcation buoys and fish spawning buoys.

### • Pollution & Waste Management

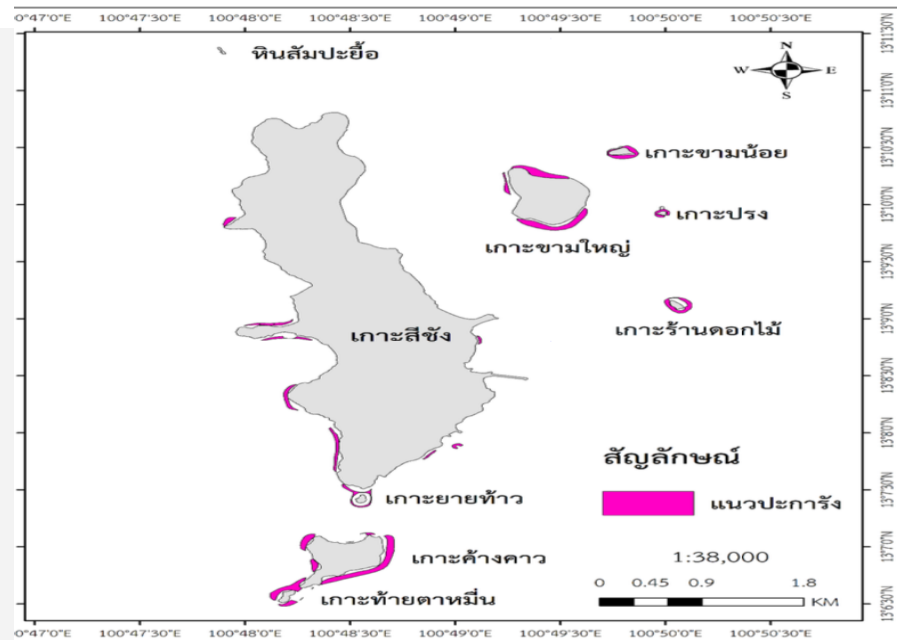
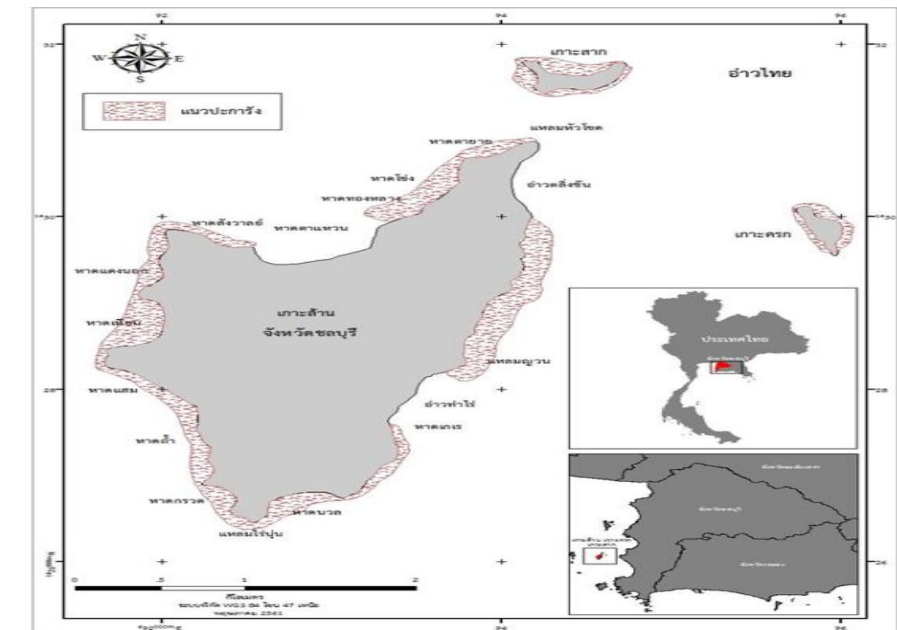
- Campaigns on sustainable tourism practices (waste on boats, legal fishing, eco-tourism).
- Beach clean-ups and underwater debris removal.
- Awareness on solid waste management, particularly addressing Koh Lan's waste accumulation crisis.

### • Monitoring & Indicators

- Agreement on coral reef health indicators (coral cover, reef species, tourism pressure).
- Establishment of community-based monitoring groups for data collection.

### • Knowledge Sharing & Best Practices

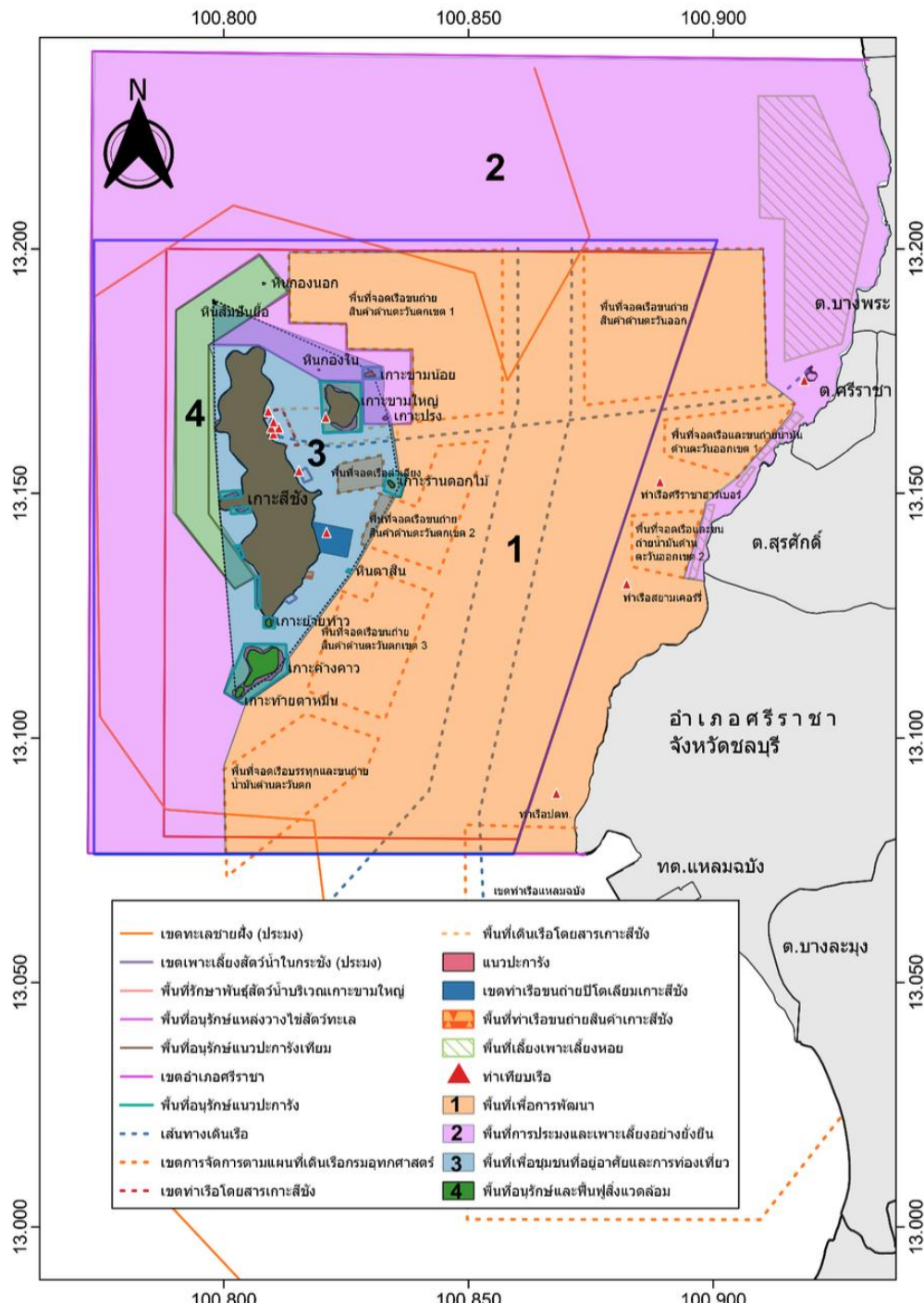
- Local dialogues and best practice workshops (2023–2025) to consolidate lessons from MSP, reef protection, and tourism management.



Map of Coral Reefs on Lan and Sichang Islands



## Highlights of Key Achievements



### 1. Protected Areas & Management

- Coral reef sites under **MSP-based management** with buoy demarcation.
- Artificial reef areas assessed for ecological & socio-economic use.

### 2. Plans for Sustainable Use & Pollution Management

- Local action plans implemented (reef monitoring, legal fishing promotion).
- **Waste campaigns & clean-ups** reduced marine debris at both sites.

### 3. Reform of Management Approaches

- Adoption of **MSP planning framework** at island level (since 2023).
- Integration of reef use rules for tourism and community enforcement.

### 4. Stakeholder Engagement

- DMCR, local government, community fishers, and **tourism operators**.
- Volunteer sea-watch groups and NGOs engaged in reef monitoring.

### 5. Enforcement & Effectiveness

- Joint patrols and community surveillance groups active.
- Evidence of improved compliance in fishing zones & reef areas.

### 6. Financial Mechanisms

- **Private sector tourism operators** contributing to clean-ups.
- Mobilization of DMCR budget with in-kind community support.

## Lessons Learnt

- **Challenge:** High tourism pressure (esp. Koh Lan)  
**Solution:** Introduced visitor management, waste campaigns, and clean-ups
- **Challenge:** Weak enforcement & illegal fishing  
**Solution:** Community surveillance + DMCR patrols with local participation
- **Challenge:** Fragmented stakeholder roles  
**Solution:** Established MSP working groups & multi-agency coordination
- **Challenge:** Limited financial resources  
**Solution:** Mobilized DMCR budget & engaged private sector in clean-ups
- **Challenge:** Data gaps for reef health & pollution  
**Solution:** Agreed common indicators & set up community monitoring groups



Thank you  
for  
your attention.



natural  
products



carbon storage



coastal  
protection



sense of place



clean waters



biodiversity