



Implementing the Strategic Action Programme for THE SOUTH CHINA SEA AND GULF OF THAILAND (SCS SAP) Project

Second Roundtable of Local Representatives of the SCS SAP Project

17 September, 2025, Jakarta, Indonesia

Chart on Practices and Lessons Learnt at the Site/local Level

Ban Don Bay, Thailand

Utai Dachyosdee

**Director of the Surat Thani Mangrove Forest Resource Management Center,
Marine and Coastal Resources Office 4**





About Ban Don Bay

Parameter

Ban Don Bay

Area (km²)

724.2 km² covering 7 districts in Surat Thani Province

Population

Coastal districts of Surat Thani (Kanchanadit, Don Sak, Tha Chana, Chaiya, Phunphin) **~74,000 people depend on bay resources**

Specific Indigenous Feature

No formal indigenous groups
Strong **community-based traditional fishers & mangrove-dependent livelihoods** LMMA pilot communities (2025)

Wetland / Habitat Area

Mangroves: 97.30 km² Seagrass: 14.02 km²
Nursery grounds for fish, crabs, shrimps, and dugong feeding habitat

Main Economic Activities

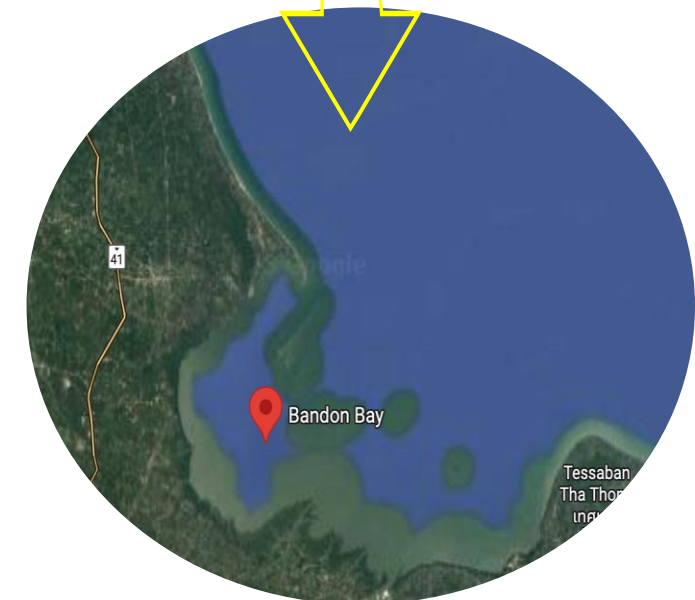
- Small-scale fisheries (fish, crabs, shellfish) - Aquaculture (shrimp ponds, oyster & mussel farming) - Coastal agriculture (coconut, rubber) - Eco-tourism (mangrove walkways, community tourism)

Threats

- Over-exploitation of fisheries & mangrove wood - Aquaculture expansion & land conversion - Encroachment & illegal cutting

Environmental Concerns

- Water pollution from aquaculture & runoff - Solid waste in mangrove zones - Habitat degradation from destructive fishing & erosion - Seagrass decline due to turbidity & pollution





Highlights of Key Activities – Ban Don Bay (Mangroves & Seagrass)

1) Baseline Surveys & Monitoring

- Comprehensive surveys of mangrove forest structure and biodiversity (~35,440 ha).
- Drone and transect surveys of seagrass beds (~2,627 ha), identifying 10 species.

2) Conservation & Management Actions

- Establishment of **conservation zones** under DMCR Act (Arts. 18 & 23).
- **Enrichment planting** in degraded mangrove areas (12.8 ha).
- LMMA registration initiated (2025) to formalize community co-management.

3) Pollution Reduction Measures

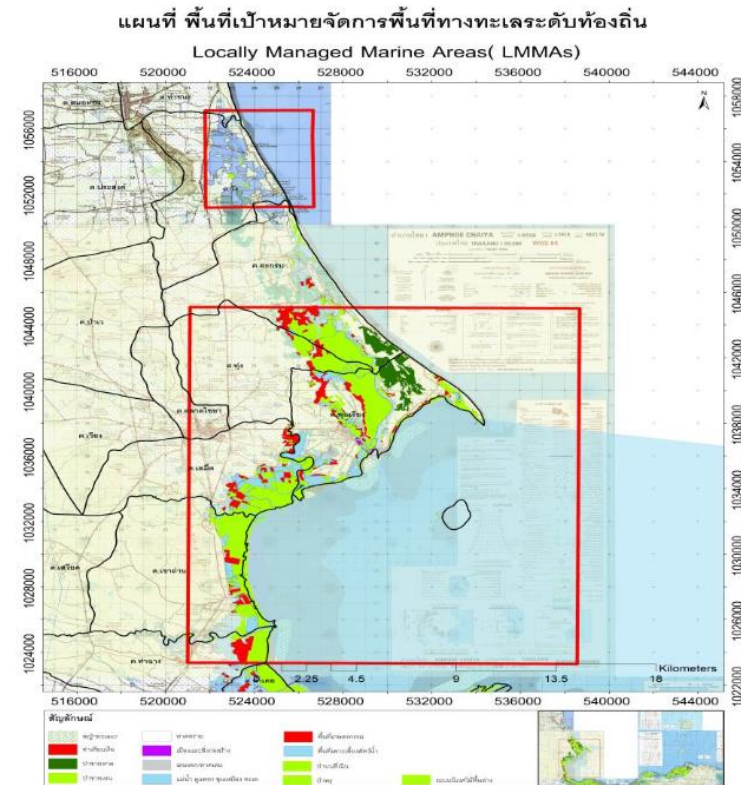
- Community-based **waste management training and clean-up campaigns** (Big Cleaning Day, International Coastal Cleanup).
- Awareness programs to reduce land-based pollution and illegal dumping.

4) Community Engagement & Capacity Building

- LMMA training for local communities to strengthen stewardship.
- Over 100 volunteers mobilized for clean-up and habitat protection activities.

5 Integrated Action Plans

- Development of **Mangrove & Seagrass Action Plan 2025–2028** for sustainable use and restoration.
- Integration of seagrass and mangrove habitats into fisheries zoning and coastal resource regulations.





Highlights of Key Achievements – Ban Don Bay (Mangroves & Seagrass)

1) Establishment & Management of Protected Areas

Conservation zones declared under DMCR Act (Arts. 18 & 23).

Mangroves and seagrass beds brought under improved management.

2) Plans for Sustainable Use & Pollution Management

Action Plan 2025–2028 developed for mangroves and seagrass.

Waste management initiatives reduced solid waste in mangrove zones.

3) Reform of Management Approaches

LMMA registration piloted in 2025, formalizing community-led management.

Integrated mangrove–seagrass into fisheries zoning frameworks.

4) Stakeholder Engagement

DMCR Region 4, local governments, community fishers, aquaculture groups, and NGOs engaged. Over 100 volunteers mobilized for clean-ups and habitat monitoring.

5) Enforcement & Effectiveness

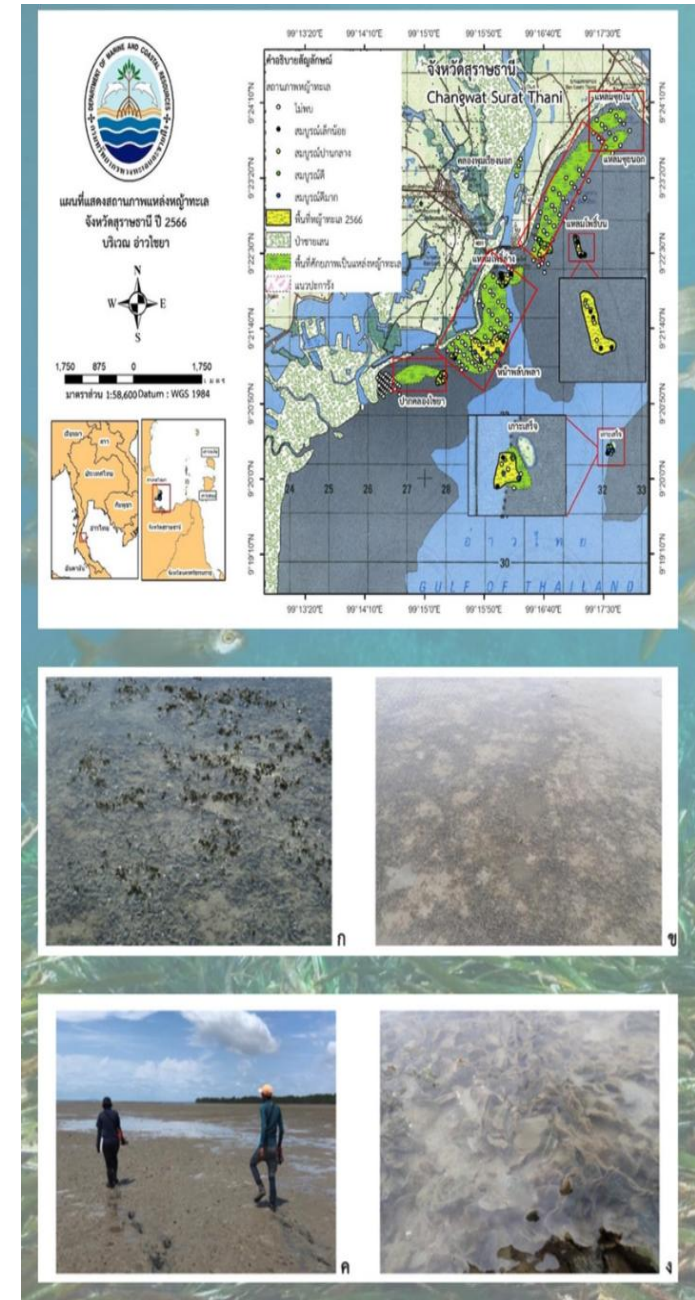
Community patrols combined with DMCR enforcement.

Improved compliance in mangrove use and fishing restrictions.

6) Financial Mechanisms

DMCR budget mobilized for restoration and patrols.

In-kind contributions from communities; private sector tourism & aquaculture starting to support clean-up activities.





Lessons Learnt

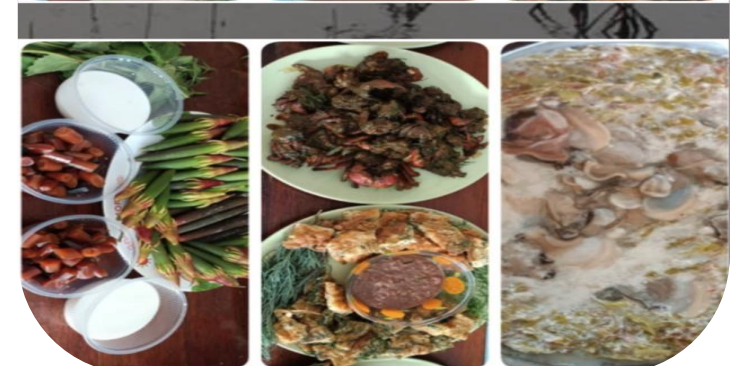
•**Challenge:** Encroachment & illegal cutting in mangroves
Lesson/Solution: Formalized protection under DMCR Act and promoted **LMMA co-management** to build community ownership.

•**Challenge:** Decline of seagrass beds from turbidity & pollution
Lesson/Solution: Introduced **drone monitoring & community surveys**, and raised awareness to reduce land-based runoff.

•**Challenge:** Solid waste in mangrove areas
Lesson/Solution: **Community clean-ups & waste training** mobilized volunteers and reduced dumping pressure.

•**Challenge:** Fragmented coordination among agencies
Lesson/Solution: Established multi-stakeholder working groups under the **2025–2028 Action Plan**.

•**Challenge:** Limited financial resources for restoration & monitoring
Lesson/Solution: Combined **DMCR funding, in-kind community support, and early private sector engagement**.



Thank you
for
your attention.

